

## Bax antibody

**Cat. No. GTX32465**

<b>Host</b>	Rabbit
<b>Clonality</b>	Polyclonal
<b>Isotype</b>	IgG
<b>Applications</b>	WB, ICC/IF, IHC-P
<b>Reactivity</b>	Human, Mouse, Rat

References ( 10 )

Package

100 µl

## Applications

**Application Note**

\*Optimal dilutions/concentrations should be determined by the researcher.

Suggested dilution	Recommended dilution
WB	1:500 - 1:2000
ICC/IF	1:50 - 1:200
IHC-P	1:50 - 1:100

Not tested in other applications.

**Calculated MW** 21 kDa. ( [Note](#) )

## Properties

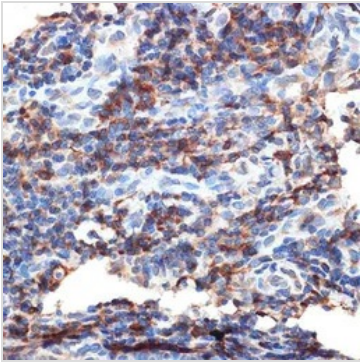
<b>Form</b>	Liquid
<b>Buffer</b>	PBS, 50% Glycerol
<b>Preservative</b>	0.02% Sodium azide
<b>Storage</b>	Store as concentrated solution. Centrifuge briefly prior to opening vial. For short-term storage (1-2 weeks), store at 4°C. For long-term storage, aliquot and store at -20°C or below. Avoid multiple freeze-thaw cycles.
<b>Concentration</b>	Batch dependent (Please refer to the vial label for the specific concentration.)
<b>Immunogen</b>	A synthetic peptide corresponding to a sequence within amino acids 1-100 of human BAX (NP_620116.1).
<b>Purification</b>	Purified by affinity chromatography
<b>Conjugation</b>	Unconjugated
<b>Note</b>	For laboratory research use only. Not for any clinical, therapeutic, or diagnostic use in humans or animals. Not for animal or human consumption.  Purchasers shall not, and agree not to enable third parties to, analyze, copy, reverse engineer or otherwise attempt to determine the structure or sequence of the product.



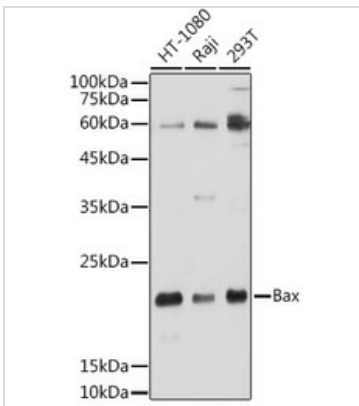
For full product information, images and publications, please visit our [website](#).

Date 2026 / 04 / 12 Page 1 of 2

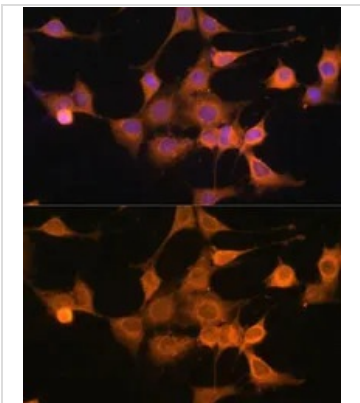
## DATA IMAGES

**GTX32465 IHC-P Image**

IHC-P analysis of human esophageal cancer tissue using GTX32465 Bax antibody.  
Dilution : 1:100

**GTX32465 WB Image**

WB analysis of various sample lysates using GTX32465 Bax antibody.  
Dilution : 1:500  
Loading : 25µg per lane

**GTX32465 ICC/IF Image**

ICC/IF analysis of NIH/3T3 cells using GTX32465 Bax antibody.  
Blue : DAPI  
Dilution : 1:100



For full product information, images and publications, please visit our [website](#).