

BRG1 antibody

Cat. No. GTX32478

Host	Rabbit
Clonality	Polyclonal
Isotype	IgG
Applications	WB, ICC/IF, IP
Reactivity	Human

Package
100 µl

Applications

Application Note

*Optimal dilutions/concentrations should be determined by the researcher.

Suggested dilution	Recommended dilution
WB	1:500 - 1:2000
ICC/IF	1:50 - 1:200
IP	1:50 - 1:200

Not tested in other applications.

Calculated MW 185 kDa. ([Note](#))

Properties

Form	Liquid
Buffer	PBS, 50% Glycerol
Preservative	0.02% Sodium azide
Storage	Store as concentrated solution. Centrifuge briefly prior to opening vial. For short-term storage (1-2 weeks), store at 4°C. For long-term storage, aliquot and store at -20°C or below. Avoid multiple freeze-thaw cycles.
Concentration	Batch dependent (Please refer to the vial label for the specific concentration.)
Immunogen	A synthetic peptide of human SMARCA4
Purification	Purified by affinity chromatography
Conjugation	Unconjugated

Note

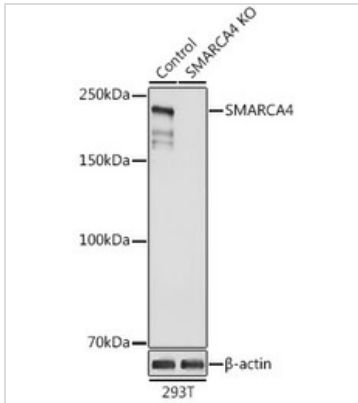
For laboratory research use only. Not for any clinical, therapeutic, or diagnostic use in humans or animals. Not for animal or human consumption.

Purchasers shall not, and agree not to enable third parties to, analyze, copy, reverse engineer or otherwise attempt to determine the structure or sequence of the product.



For full product information, images and publications, please visit our [website](#).

DATA IMAGES

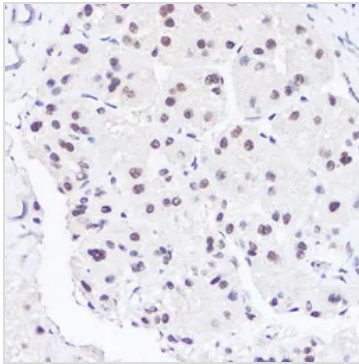


GTX32478 WB Image

WB analysis of 293T cell lysate using GTX32478 BRG1 antibody. The signal was developed with ECL plus-Enhanced.

Dilution : 1:1000

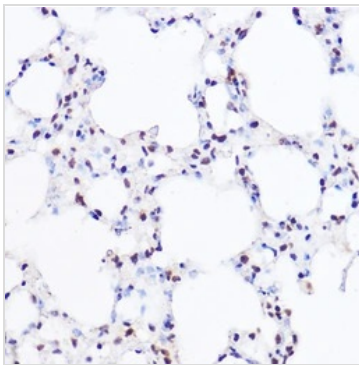
Loading : 25µg per lane



GTX32478 ICC/IF Image

ICC/IF analysis of A549 cells using GTX32478 BRG1 antibody.

Blue : DAPI



GTX32478 IP Image

IP analysis of 293T cell lysate using GTX32478 BRG1 antibody.

Antibody amount : 3µg / 300µg lysate

Dilution : 1:1000



For full product information, images and publications, please visit our [website](https://www.genetex.com).