

FKBP6 antibody

Cat. No. GTX32605

| | |
|--------------|-------------------|
| Host | Rabbit |
| Clonality | Polyclonal |
| Isotype | IgG |
| Applications | WB, ICC/IF, IHC-P |
| Reactivity | Human, Mouse, Rat |

Package
100 µl

Applications

Application Note

*Optimal dilutions/concentrations should be determined by the researcher.

| Suggested dilution | Recommended dilution |
|--------------------|----------------------|
| WB | 1:500 - 1:2000 |
| ICC/IF | 1:50 - 1:100 |
| IHC-P | 1:50 - 1:200 |

Not tested in other applications.

Calculated MW 37 kDa. ([Note](#))

Properties

| | |
|---------------|--|
| Form | Liquid |
| Buffer | PBS, 50% Glycerol |
| Preservative | 0.02% Sodium azide |
| Storage | Store as concentrated solution. Centrifuge briefly prior to opening vial. For short-term storage (1-2 weeks), store at 4°C. For long-term storage, aliquot and store at -20°C or below. Avoid multiple freeze-thaw cycles. |
| Concentration | Batch dependent (Please refer to the vial label for the specific concentration.) |
| Immunogen | Recombinant fusion protein containing a sequence corresponding to amino acids 1-327 of human FKBP6 (NP_003593.3). |
| Purification | Purified by affinity chromatography |
| Conjugation | Unconjugated |

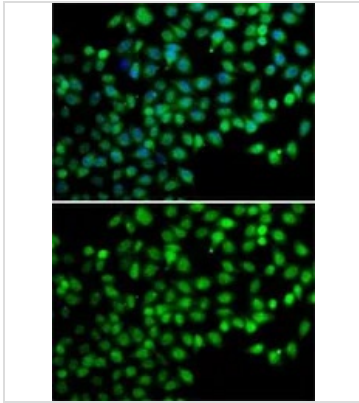
Note

For laboratory research use only. Not for any clinical, therapeutic, or diagnostic use in humans or animals. Not for animal or human consumption.

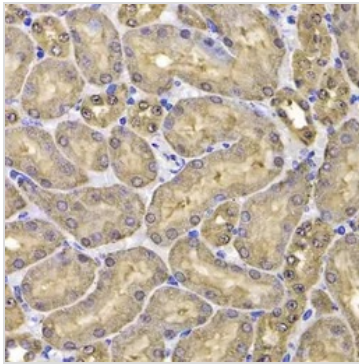
Purchasers shall not, and agree not to enable third parties to, analyze, copy, reverse engineer or otherwise attempt to determine the structure or sequence of the product.



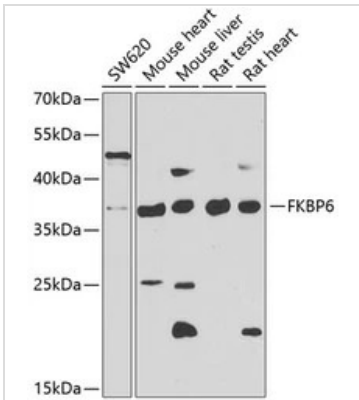
For full product information, images and publications, please visit our [website](#).

DATA IMAGES

GTX32605 ICC/IF Image

ICC/IF analysis of A549 cells using GTX32605 FKBP6 antibody.
Blue : DAPI


GTX32605 IHC-P Image

IHC-P analysis of mouse kidney tissue using GTX32605 FKBP6 antibody.
Dilution : 1:100


GTX32605 WB Image

WB analysis of various sample lysates using GTX32605 FKBP6 antibody.
Dilution : 1:1000
Loading : 25µg per lane



For full product information, images and publications, please visit our [website](https://www.genetex.com).