

# GPD1 antibody

**Cat. No. GTX32630**

|                     |                   |
|---------------------|-------------------|
| <b>Host</b>         | Rabbit            |
| <b>Clonality</b>    | Polyclonal        |
| <b>Isotype</b>      | IgG               |
| <b>Applications</b> | WB, IHC-P         |
| <b>Reactivity</b>   | Human, Mouse, Rat |

**Package**  
100 µl

## Applications

### Application Note

\*Optimal dilutions/concentrations should be determined by the researcher.

| Suggested dilution | Recommended dilution |
|--------------------|----------------------|
| WB                 | 1:500 - 1:2000       |
| IHC-P              | 1:50 - 1:200         |

Not tested in other applications.

**Calculated MW** 38 kDa. ( [Note](#) )

## Properties

|                      |  |
|----------------------|--|
| <b>Form</b>          | Liquid   |
| <b>Buffer</b>        | PBS, 50% Glycerol  |
| <b>Preservative</b>  | 0.02% Sodium azide   |
| <b>Storage</b>       | Store as concentrated solution. Centrifuge briefly prior to opening vial. For short-term storage (1-2 weeks), store at 4°C. For long-term storage, aliquot and store at -20°C or below. Avoid multiple freeze-thaw cycles. |
| <b>Concentration</b> | Batch dependent (Please refer to the vial label for the specific concentration.)   |
| <b>Immunogen</b>     | Recombinant fusion protein containing a sequence corresponding to amino acids 1-349 of human GPD1 (NP_005267.2).   |
| <b>Purification</b>  | Purified by affinity chromatography  |
| <b>Conjugation</b>   | Unconjugated   |

### Note

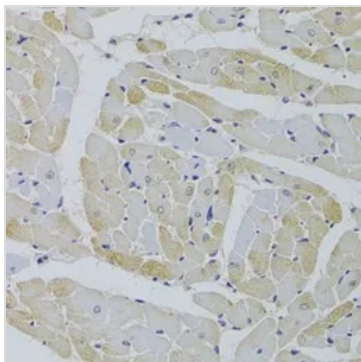
For laboratory research use only. Not for any clinical, therapeutic, or diagnostic use in humans or animals. Not for animal or human consumption.

Purchasers shall not, and agree not to enable third parties to, analyze, copy, reverse engineer or otherwise attempt to determine the structure or sequence of the product.



For full product information, images and publications, please visit our [website](#).

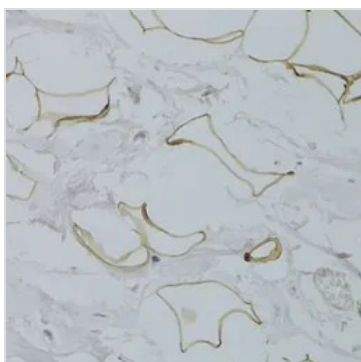
## DATA IMAGES



### GTX32630 IHC-P Image

IHC-P analysis of rat heart tissue using GTX32630 GPD1 antibody.

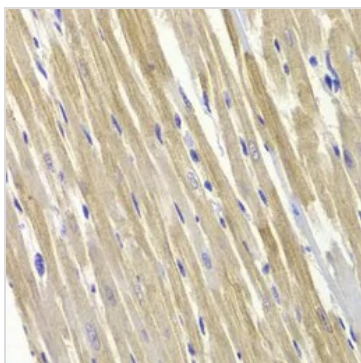
Dilution : 1:100



### GTX32630 IHC-P Image

IHC-P analysis of human breast adipocytes tissue using GTX32630 GPD1 antibody.

Dilution : 1:100



### GTX32630 IHC-P Image

IHC-P analysis of rat heart tissue using GTX32630 GPD1 antibody.

Dilution : 1:100



For full product information, images and publications, please visit our [website](https://www.genetex.com).