

HADHA antibody

Cat. No. GTX32642

Host	Rabbit
Clonality	Polyclonal
Isotype	IgG
Applications	WB, ICC/IF, IP
Reactivity	Human, Mouse

Package
100 µl

Applications

Application Note

*Optimal dilutions/concentrations should be determined by the researcher.

Suggested dilution	Recommended dilution
WB	1:500 - 1:2000
ICC/IF	1:50 - 1:200
IP	1:50 - 1:100

Not tested in other applications.

Calculated MW 83 kDa. ([Note](#))

Properties

Form	Liquid
Buffer	PBS, 50% Glycerol
Preservative	0.02% Sodium azide
Storage	Store as concentrated solution. Centrifuge briefly prior to opening vial. For short-term storage (1-2 weeks), store at 4°C. For long-term storage, aliquot and store at -20°C or below. Avoid multiple freeze-thaw cycles.
Concentration	Batch dependent (Please refer to the vial label for the specific concentration.)
Immunogen	Recombinant fusion protein containing a sequence corresponding to amino acids 484-763 of human HADHA (NP_000173.2).
Purification	Purified by affinity chromatography
Conjugation	Unconjugated

Note

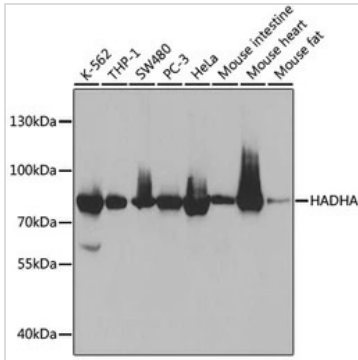
For laboratory research use only. Not for any clinical, therapeutic, or diagnostic use in humans or animals. Not for animal or human consumption.

Purchasers shall not, and agree not to enable third parties to, analyze, copy, reverse engineer or otherwise attempt to determine the structure or sequence of the product.



For full product information, images and publications, please visit our [website](#).

DATA IMAGES

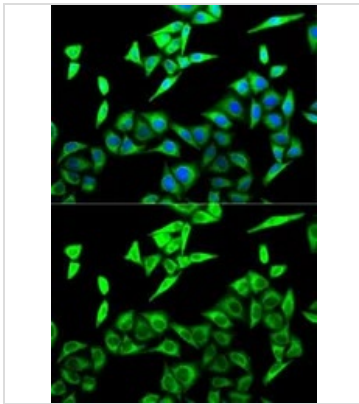


GTX32642 WB Image

WB analysis of various sample lysates using GTX32642 HADHA antibody.

Dilution : 1:1000

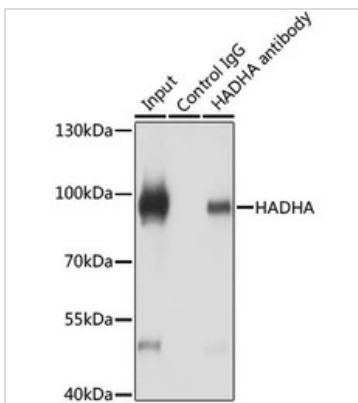
Loading : 25µg per lane



GTX32642 ICC/IF Image

ICC/IF analysis of U2OS cells using GTX32642 HADHA antibody.

Blue : DAPI



GTX32642 IP Image

IP analysis of HeLa cell lysate using GTX32642 HADHA antibody.

Antibody amount : 3µg / 200µg lysate

Dilution : 1:1000



For full product information, images and publications, please visit our [website](https://www.genetex.com).