

## Heparanase 1 antibody

Cat. No. GTX32650

Host	Rabbit
Clonality	Polyclonal
Isotype	IgG
Applications	WB, ICC/IF
Reactivity	Human, Mouse, Rat

References ( 3 )

Package

100 µl

## Applications

## Application Note

\*Optimal dilutions/concentrations should be determined by the researcher.

Suggested dilution	Recommended dilution
WB	1:500 - 1:2000
ICC/IF	1:10 - 1:100

Not tested in other applications.

Calculated MW 61 kDa. ( [Note](#) )

## Properties

Form	Liquid
Buffer	PBS, 50% Glycerol
Preservative	0.02% Sodium azide
Storage	Store as concentrated solution. Centrifuge briefly prior to opening vial. For short-term storage (1-2 weeks), store at 4°C. For long-term storage, aliquot and store at -20°C or below. Avoid multiple freeze-thaw cycles.
Concentration	Batch dependent (Please refer to the vial label for the specific concentration.)
Immunogen	Recombinant fusion protein containing a sequence corresponding to amino acids 36-275 of human HPSE (NP_001092010.1).
Purification	Purified by affinity chromatography
Conjugation	Unconjugated

## Note

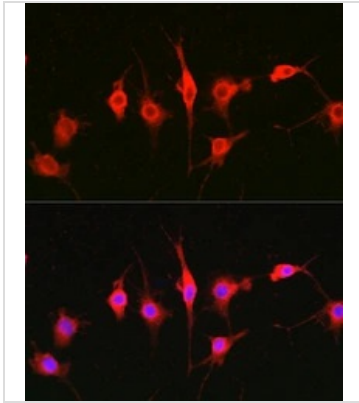
For laboratory research use only. Not for any clinical, therapeutic, or diagnostic use in humans or animals. Not for animal or human consumption.

Purchasers shall not, and agree not to enable third parties to, analyze, copy, reverse engineer or otherwise attempt to determine the structure or sequence of the product.



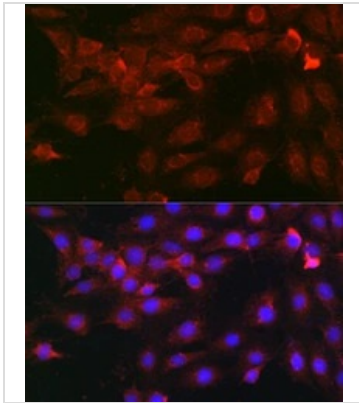
For full product information, images and publications, please visit our [website](#).

## DATA IMAGES



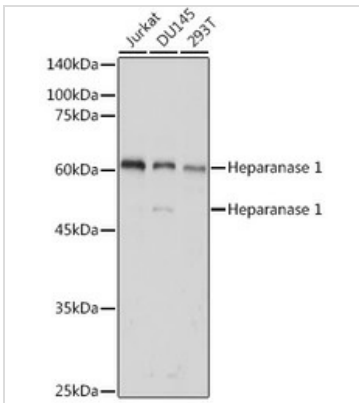
### GTX32650 ICC/IF Image

ICC/IF analysis of BALB-3T3 cells using GTX32650 Heparanase 1 antibody.  
Blue : DAPI



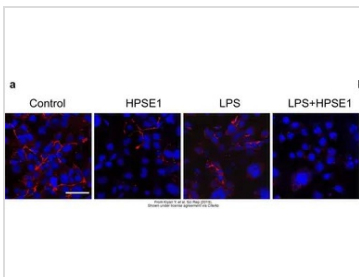
### GTX32650 ICC/IF Image

ICC/IF analysis of C6 cells using GTX32650 Heparanase 1 antibody.  
Blue : DAPI



### GTX32650 WB Image

WB analysis of various sample lysates using GTX32650 Heparanase 1 antibody.  
Dilution : 1:1000  
Loading : 25µg per lane



### GTX32650 ICC/IF Image

The data was published in the journal Sci Rep in 2019. [PMID: 31537875](https://doi.org/10.1038/s41598-019-53787-5)



For full product information, images and publications, please visit our [website](https://www.genetex.com).