

# IDH2 antibody

**Cat. No. GTX32666**

<b>Host</b>	Rabbit
<b>Clonality</b>	Polyclonal
<b>Isotype</b>	IgG
<b>Applications</b>	WB, ICC/IF, IHC-P, IP, ChIP assay
<b>Reactivity</b>	Human, Mouse, Rat

**Package**  
100 µl

## Applications

### Application Note

\*Optimal dilutions/concentrations should be determined by the researcher.

Suggested dilution	Recommended dilution
WB	1:500 - 1:2000
ICC/IF	1:20 - 1:50
IHC-P	1:50 - 1:200
IP	1:50 - 1:200
ChIP assay	1:20 - 1:100

Not tested in other applications.

**Calculated MW** 51 kDa. ( [Note](#) )

## Properties

<b>Form</b>	Liquid
<b>Buffer</b>	PBS, 50% Glycerol
<b>Preservative</b>	0.02% Sodium azide
<b>Storage</b>	Store as concentrated solution. Centrifuge briefly prior to opening vial. For short-term storage (1-2 weeks), store at 4°C. For long-term storage, aliquot and store at -20°C or below. Avoid multiple freeze-thaw cycles.
<b>Concentration</b>	Batch dependent (Please refer to the vial label for the specific concentration.)
<b>Immunogen</b>	Recombinant fusion protein containing a sequence corresponding to amino acids 193-452 of human IDH2 (NP_002159.2).
<b>Purification</b>	Purified by affinity chromatography
<b>Conjugation</b>	Unconjugated

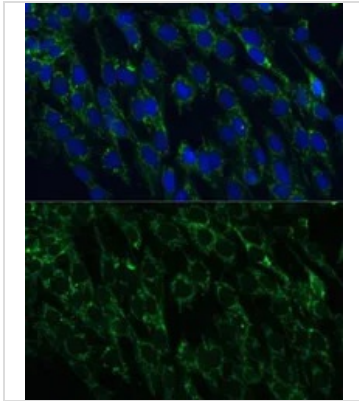


For full product information, images and publications, please visit our [website](#).

For laboratory research use only. Not for any clinical, therapeutic, or diagnostic use in humans or animals. Not for animal or human consumption.

**Note**

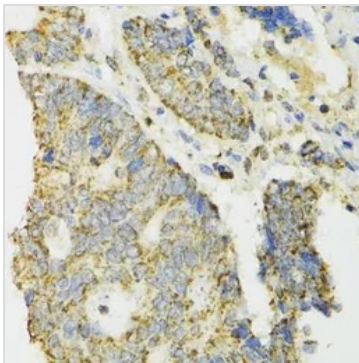
Purchasers shall not, and agree not to enable third parties to, analyze, copy, reverse engineer or otherwise attempt to determine the structure or sequence of the product.

**DATA IMAGES**

**GTX32666 ICC/IF Image**

ICC/IF analysis of C6 cells using GTX32666 IDH2 antibody.

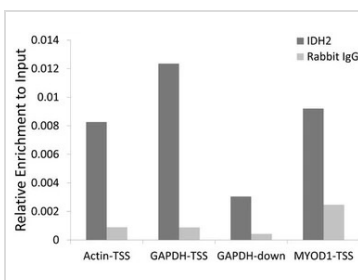
Blue : DAPI

Dilution : 1:100


**GTX32666 IHC-P Image**

IHC-P analysis of human colon carcinoma tissue using GTX32666 IDH2 antibody.

Dilution : 1:100


**GTX32666 ChIP assay Image**

ChIP analysis of 293T cell lysate using GTX32666 IDH2 antibody. The amount of immunoprecipitated DNA was checked by quantitative PCR. Histogram was constructed by the ratios of the immunoprecipitated DNA to the input.



For full product information, images and publications, please visit our [website](https://www.genetex.com).