

## IL18 antibody

Cat. No. GTX32675

Host	Rabbit
Clonality	Polyclonal
Isotype	IgG
Applications	WB, IHC-P, IP
Reactivity	Human

References ( 5 )

Package

100 µl

## Applications

## Application Note

\*Optimal dilutions/concentrations should be determined by the researcher.

Suggested dilution	Recommended dilution
WB	1:500 - 1:2000
IHC-P	Assay dependent
IP	1:50 - 1:100

Not tested in other applications.

Calculated MW 22 kDa. ( [Note](#) )

## Properties

Form	Liquid
Buffer	PBS, 50% Glycerol
Preservative	0.09% Sodium azide
Storage	Store as concentrated solution. Centrifuge briefly prior to opening vial. For short-term storage (1-2 weeks), store at 4°C. For long-term storage, aliquot and store at -20°C or below. Avoid multiple freeze-thaw cycles.
Concentration	Batch dependent (Please refer to the vial label for the specific concentration.)
Immunogen	Recombinant fusion protein containing a sequence corresponding to amino acids 37-193 of human IL18 (NP_001553.1).
Purification	Purified by affinity chromatography
Conjugation	Unconjugated

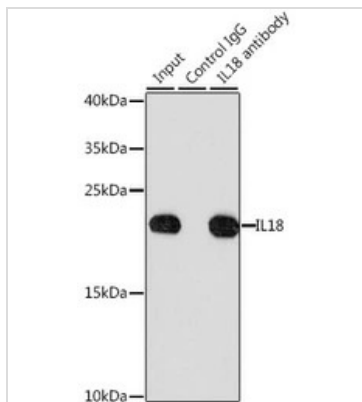
## Note

For laboratory research use only. Not for any clinical, therapeutic, or diagnostic use in humans or animals. Not for animal or human consumption.

Purchasers shall not, and agree not to enable third parties to, analyze, copy, reverse engineer or otherwise attempt to determine the structure or sequence of the product.



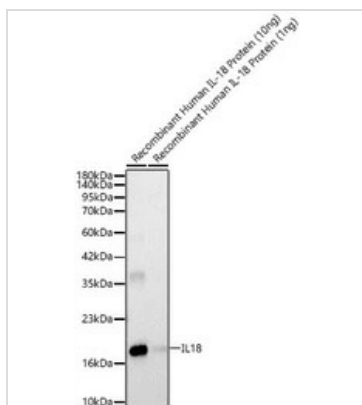
For full product information, images and publications, please visit our [website](#).

**DATA IMAGES**

**GTX32675 IP Image**

IP analysis of HeLa cell lysate using GTX32675 IL18 antibody.

Antibody amount : 3 $\mu$ g / 200 $\mu$ g lysate

Dilution : 1:1000


**GTX32675 WB Image**

WB analysis of human recombinant IL-18 protein using GTX32675 IL18 antibody.

Dilution : 1:500

Loading : 10ng (left) and 1ng (right)



For full product information, images and publications, please visit our [website](http://www.genetex.com).