

Rad50 antibody

Cat. No. GTX32832

Host	Rabbit
Clonality	Polyclonal
Isotype	IgG
Applications	WB, IHC-P, IP
Reactivity	Human, Mouse, Rat

References (1)

Package

100 µl

Applications

Application Note

*Optimal dilutions/concentrations should be determined by the researcher.

Suggested dilution	Recommended dilution
WB	1:500 - 1:2000
IHC-P	1:50 - 1:200
IP	1:20 - 1:50

Not tested in other applications.

Calculated MW 154 kDa. ([Note](#))

Properties

Form	Liquid
Buffer	PBS, 50% Glycerol
Preservative	0.02% Sodium azide
Storage	Store as concentrated solution. Centrifuge briefly prior to opening vial. For short-term storage (1-2 weeks), store at 4°C. For long-term storage, aliquot and store at -20°C or below. Avoid multiple freeze-thaw cycles.
Concentration	Batch dependent (Please refer to the vial label for the specific concentration.)
Immunogen	A synthetic peptide corresponding to a sequence within amino acids 1-100 of human RAD50 (NP_005723.2).
Purification	Purified by affinity chromatography
Conjugation	Unconjugated

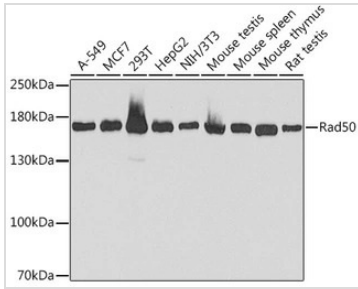
Note

For laboratory research use only. Not for any clinical, therapeutic, or diagnostic use in humans or animals. Not for animal or human consumption.

Purchasers shall not, and agree not to enable third parties to, analyze, copy, reverse engineer or otherwise attempt to determine the structure or sequence of the product.



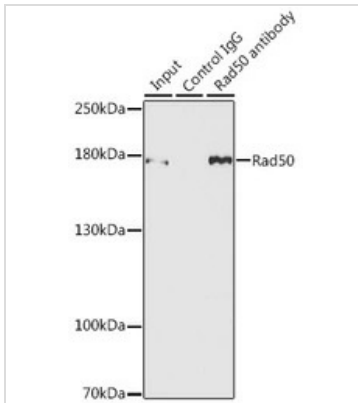
For full product information, images and publications, please visit our [website](#).

DATA IMAGES

GTx32832 WB Image

WB analysis of various sample lysates using GTx32832 Rad50 antibody.

Dilution : 1:1000

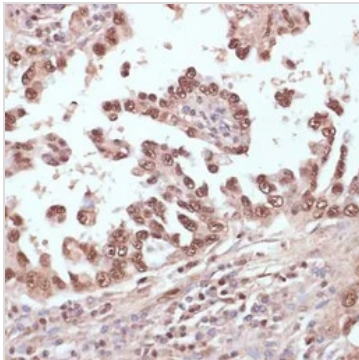
Loading : 25µg per lane


GTx32832 IP Image

IP analysis of MCF7 cell lysate using GTx32832 Rad50 antibody.

Antibody amount : 3µg / 150µg lysate

Dilution : 1:500


GTx32832 IHC-P Image

IHC-P analysis of human lung cancer tissue using GTx32832 Rad50 antibody.

Dilution : 1:100



For full product information, images and publications, please visit our [website](https://www.genetex.com).