

# ROCK1 antibody

**Cat. No. GTX32843**

<b>Host</b>	Rabbit
<b>Clonality</b>	Polyclonal
<b>Isotype</b>	IgG
<b>Applications</b>	WB, IHC-P, IP
<b>Reactivity</b>	Human, Mouse

**Package**  
100 µl

## Applications

### Application Note

\*Optimal dilutions/concentrations should be determined by the researcher.

Suggested dilution	Recommended dilution
WB	1:500 - 1:2000
IHC-P	1:50 - 1:100
IP	1:50 - 1:100

Not tested in other applications.

**Calculated MW** 158 kDa. ([Note](#))

## Properties

<b>Form</b>	Liquid
<b>Buffer</b>	PBS, 50% Glycerol
<b>Preservative</b>	0.02% Sodium azide
<b>Storage</b>	Store as concentrated solution. Centrifuge briefly prior to opening vial. For short-term storage (1-2 weeks), store at 4°C. For long-term storage, aliquot and store at -20°C or below. Avoid multiple freeze-thaw cycles.
<b>Concentration</b>	Batch dependent (Please refer to the vial label for the specific concentration.)
<b>Immunogen</b>	Recombinant fusion protein containing a sequence corresponding to amino acids 400-660 of human ROCK1 (NP_005397.1).
<b>Purification</b>	Purified by affinity chromatography
<b>Conjugation</b>	Unconjugated

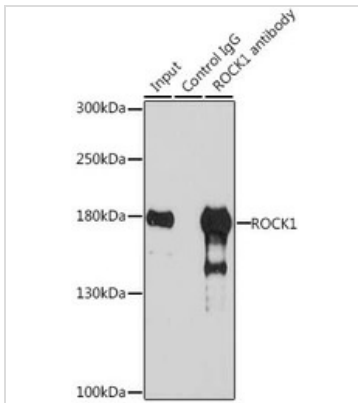
### Note

For laboratory research use only. Not for any clinical, therapeutic, or diagnostic use in humans or animals. Not for animal or human consumption.

Purchasers shall not, and agree not to enable third parties to, analyze, copy, reverse engineer or otherwise attempt to determine the structure or sequence of the product.



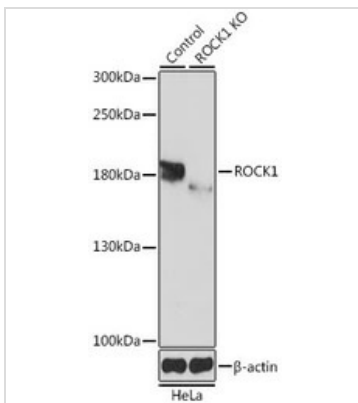
For full product information, images and publications, please visit our [website](#).

**DATA IMAGES**

**GTX32843 IP Image**

IP analysis of 293T cell lysate using GTX32843 ROCK1 antibody.

Antibody amount : 3 $\mu$ g / 200 $\mu$ g lysate

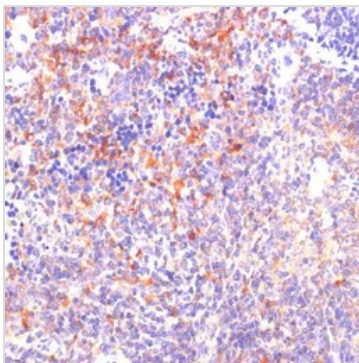
Dilution : 1:1000


**GTX32843 WB Image**

WB analysis of normal (control) and knockout (KO) HeLa cell lysate using GTX32843 ROCK1 antibody.

Dilution : 1:1000

Loading : 25 $\mu$ g per lane


**GTX32843 IHC-P Image**

IHC-P analysis of mouse spleen tissue using GTX32843 ROCK1 antibody.

Dilution : 1:100



For full product information, images and publications, please visit our [website](https://www.genetex.com).