

## SIN3A antibody

Cat. No. GTX32874

Host	Rabbit
Clonality	Polyclonal
Isotype	IgG
Applications	WB, ICC/IF, IP
Reactivity	Human, Mouse, Monkey

Package  
100 µl

## Applications

## Application Note

\*Optimal dilutions/concentrations should be determined by the researcher.

Suggested dilution	Recommended dilution
WB	1:500 - 1:2000
ICC/IF	1:50 - 1:200
IP	1:50 - 1:100

Not tested in other applications.

Calculated MW 145 kDa. ([Note](#))

## Properties

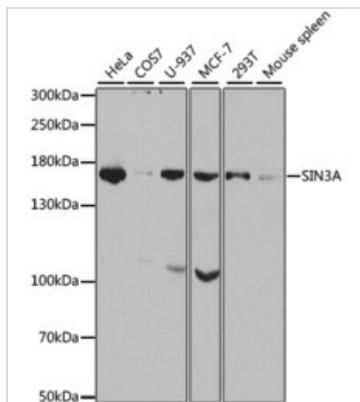
Form	Liquid
Buffer	PBS, 50% Glycerol
Preservative	0.02% Sodium azide
Storage	Store as concentrated solution. Centrifuge briefly prior to opening vial. For short-term storage (1-2 weeks), store at 4°C. For long-term storage, aliquot and store at -20°C or below. Avoid multiple freeze-thaw cycles.
Concentration	Batch dependent (Please refer to the vial label for the specific concentration.)
Immunogen	Recombinant fusion protein containing a sequence corresponding to amino acids 1-120 of human SIN3A (NP_056292.1).
Purification	Purified by affinity chromatography
Conjugation	Unconjugated

## Note

For laboratory research use only. Not for any clinical, therapeutic, or diagnostic use in humans or animals. Not for animal or human consumption.

Purchasers shall not, and agree not to enable third parties to, analyze, copy, reverse engineer or otherwise attempt to determine the structure or sequence of the product.

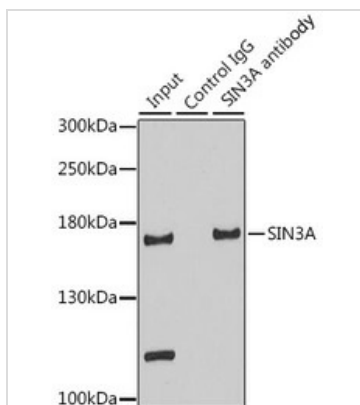
For full product information, images and publications, please visit our [website](#).

**DATA IMAGES**

**GTX32874 WB Image**

WB analysis of various sample lysates using GTX32874 SIN3A antibody.

Dilution : 1:1000

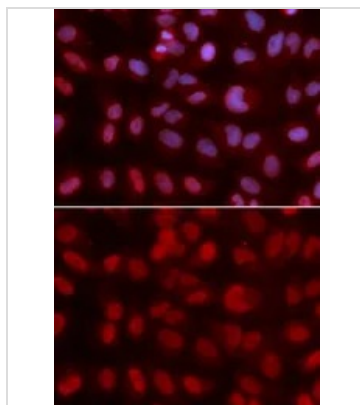
Loading : 25µg per lane


**GTX32874 IP Image**

IP analysis of HeLa cell lysate using GTX32874 SIN3A antibody.

Antibody amount : 3µg / 200µg lysate

Dilution : 1:500


**GTX32874 ICC/IF Image**

ICC/IF analysis of U2OS cells using GTX32874 SIN3A antibody.

Blue : DAPI



For full product information, images and publications, please visit our [website](https://www.genetex.com).