

SMN2 antibody

Cat. No. GTX32884

Host	Rabbit
Clonality	Polyclonal
Isotype	IgG
Applications	WB, IP
Reactivity	Human

Package
100 µl

Applications

Application Note

*Optimal dilutions/concentrations should be determined by the researcher.

Suggested dilution	Recommended dilution
WB	1:500 - 1:2000
IP	1:50 - 1:100

Not tested in other applications.

Calculated MW 32 kDa. ([Note](#))

Properties

Form	Liquid
Buffer	PBS, 50% Glycerol
Preservative	0.02% Sodium azide
Storage	Store as concentrated solution. Centrifuge briefly prior to opening vial. For short-term storage (1-2 weeks), store at 4°C. For long-term storage, aliquot and store at -20°C or below. Avoid multiple freeze-thaw cycles.
Concentration	Batch dependent (Please refer to the vial label for the specific concentration.)
Immunogen	Recombinant fusion protein containing a sequence corresponding to amino acids 1-197 of human SMN2 (NP_059107.1).
Purification	Purified by affinity chromatography
Conjugation	Unconjugated

Note

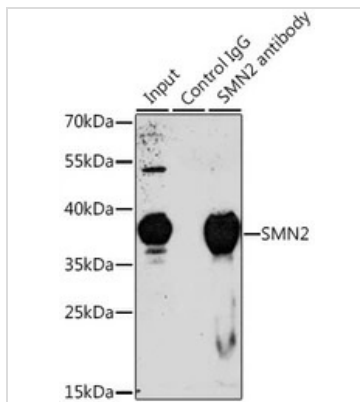
For laboratory research use only. Not for any clinical, therapeutic, or diagnostic use in humans or animals. Not for animal or human consumption.

Purchasers shall not, and agree not to enable third parties to, analyze, copy, reverse engineer or otherwise attempt to determine the structure or sequence of the product.



For full product information, images and publications, please visit our [website](#).

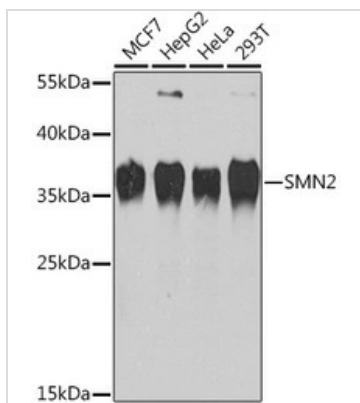
DATA IMAGES


GTX32884 IP Image

IP analysis of 293T cell lysate using GTX32884 SMN2 antibody.

Antibody amount : 3 μ g / 200 μ g lysate

Dilution : 1:1000


GTX32884 WB Image

WB analysis of various sample lysates using GTX32884 SMN2 antibody.

Dilution : 1:1000

Loading : 25 μ g per lane



For full product information, images and publications, please visit our [website](https://www.genetex.com).