

Aprataxin antibody

Cat. No. GTX33016

Host	Rabbit
Clonality	Polyclonal
Isotype	IgG
Applications	WB, ICC/IF, IP
Reactivity	Human

Package
100 µl

Applications

Application Note

*Optimal dilutions/concentrations should be determined by the researcher.

Suggested dilution	Recommended dilution
WB	1:500 - 1:2000
ICC/IF	1:50 - 1:100
IP	1:20 - 1:50

Not tested in other applications.

Calculated MW 41 kDa. ([Note](#))

Properties

Form	Liquid
Buffer	PBS, 50% Glycerol
Preservative	0.02% Sodium azide
Storage	Store as concentrated solution. Centrifuge briefly prior to opening vial. For short-term storage (1-2 weeks), store at 4°C. For long-term storage, aliquot and store at -20°C or below. Avoid multiple freeze-thaw cycles.
Concentration	Batch dependent (Please refer to the vial label for the specific concentration.)
Immunogen	Recombinant fusion protein containing a sequence corresponding to amino acids 93-342 of human APTX (NP_001182178.1).
Purification	Purified by affinity chromatography
Conjugation	Unconjugated

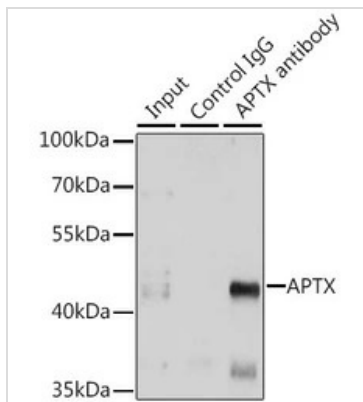
Note For laboratory research use only. Not for any clinical, therapeutic, or diagnostic use in humans or animals. Not for animal or human consumption.

Purchasers shall not, and agree not to enable third parties to, analyze, copy, reverse engineer or otherwise attempt to determine the structure or sequence of the product.



For full product information, images and publications, please visit our [website](#).

DATA IMAGES

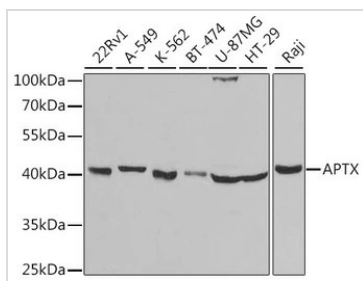


GTX33016 IP Image

IP analysis of A549 cell lysate using GTX33016 Aprataxin antibody.

Antibody amount : 3µg / 150µg lysate

Dilution : 1:500

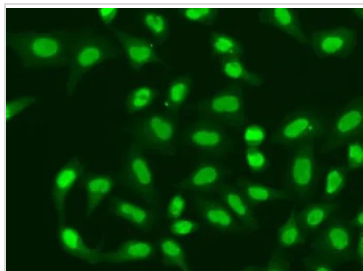


GTX33016 WB Image

WB analysis of various sample lysates using GTX33016 Aprataxin antibody.

Dilution : 1:1000

Loading : 25µg per lane



GTX33016 ICC/IF Image

ICC/IF analysis of A549 cells using GTX33016 Aprataxin antibody.



For full product information, images and publications, please visit our [website](#).