

Cytokeratin 5 antibody

Cat. No. GTX33140

Host	Rabbit
Clonality	Polyclonal
Isotype	IgG
Applications	WB, ICC/IF, IHC-P, IP
Reactivity	Human, Mouse

Package
100 µl

Applications

Application Note

*Optimal dilutions/concentrations should be determined by the researcher.

Suggested dilution	Recommended dilution
WB	1:500 - 1:2000
ICC/IF	1:50 - 1:200
IHC-P	1:50 - 1:200
IP	1:50 - 1:200

Not tested in other applications.

Calculated MW 62 kDa. ([Note](#))

Properties

Form	Liquid
Buffer	PBS, 50% Glycerol
Preservative	0.02% Sodium azide
Storage	Store as concentrated solution. Centrifuge briefly prior to opening vial. For short-term storage (1-2 weeks), store at 4°C. For long-term storage, aliquot and store at -20°C or below. Avoid multiple freeze-thaw cycles.
Concentration	Batch dependent (Please refer to the vial label for the specific concentration.)
Immunogen	Recombinant protein of human KRT5
Purification	Purified by affinity chromatography
Conjugation	Unconjugated

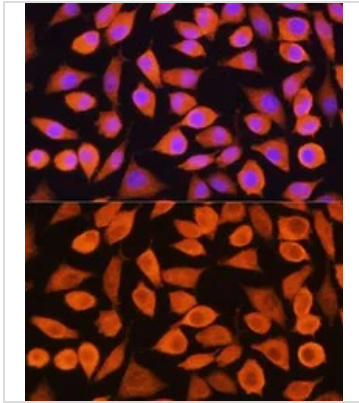
Note

For laboratory research use only. Not for any clinical, therapeutic, or diagnostic use in humans or animals. Not for animal or human consumption.

Purchasers shall not, and agree not to enable third parties to, analyze, copy, reverse engineer or otherwise attempt to determine the structure or sequence of the product.



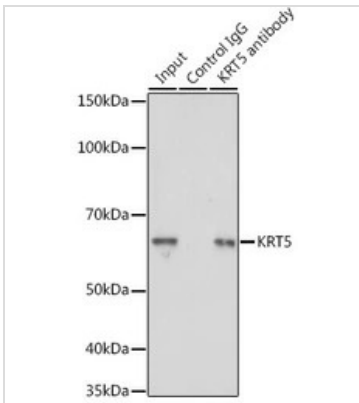
For full product information, images and publications, please visit our [website](#).

DATA IMAGES

GTX33140 ICC/IF Image

ICC/IF analysis of L929 cells using GTX33140 Cytokeratin 5 antibody.

Blue : DAPI

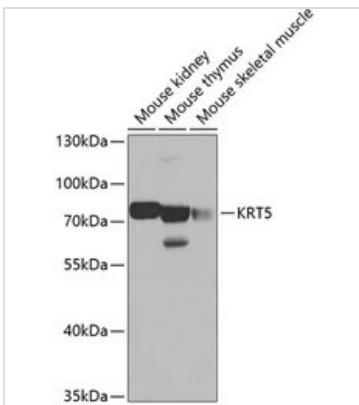
Dilution : 1:100


GTX33140 IP Image

IP analysis of A431 cell lysate using GTX33140 Cytokeratin 5 antibody.

Antibody amount : 3μg / 200μg lysate

Dilution : 1:5000


GTX33140 WB Image

WB analysis of various sample lysates using GTX33140 Cytokeratin 5 antibody.

Dilution : 1:500

Loading : 25μg per lane



For full product information, images and publications, please visit our [website](http://www.genetex.com).