

# DNA polymerase epsilon 3 antibody

**Cat. No. GTX33158**

<b>Host</b>	Rabbit
<b>Clonality</b>	Polyclonal
<b>Isotype</b>	IgG
<b>Applications</b>	WB, ICC/IF
<b>Reactivity</b>	Human, Mouse

**Package**  
100 µl

## Applications

### Application Note

\*Optimal dilutions/concentrations should be determined by the researcher.

Suggested dilution	Recommended dilution
WB	1:500 - 1:2000
ICC/IF	1:50 - 1:100

Not tested in other applications.

**Calculated MW** 17 kDa. ( [Note](#) )

## Properties

<b>Form</b>	Liquid
<b>Buffer</b>	PBS, 50% Glycerol
<b>Preservative</b>	0.02% Sodium azide
<b>Storage</b>	Store as concentrated solution. Centrifuge briefly prior to opening vial. For short-term storage (1-2 weeks), store at 4°C. For long-term storage, aliquot and store at -20°C or below. Avoid multiple freeze-thaw cycles.
<b>Concentration</b>	Batch dependent (Please refer to the vial label for the specific concentration.)
<b>Immunogen</b>	Recombinant fusion protein containing a sequence corresponding to amino acids 1-147 of human POLE3 (NP_059139.3).
<b>Purification</b>	Purified by affinity chromatography
<b>Conjugation</b>	Unconjugated

### Note

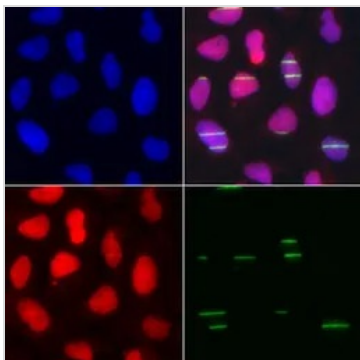
For laboratory research use only. Not for any clinical, therapeutic, or diagnostic use in humans or animals. Not for animal or human consumption.

Purchasers shall not, and agree not to enable third parties to, analyze, copy, reverse engineer or otherwise attempt to determine the structure or sequence of the product.



For full product information, images and publications, please visit our [website](#).

## DATA IMAGES



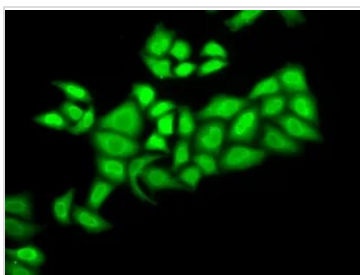
### GTx33158 ICC/IF Image

ICC/IF analysis of U2OS cells using GTx33158 DNA polymerase epsilon 3 antibody. Cells were treated by UV-A laser.

Red : Primary antibody

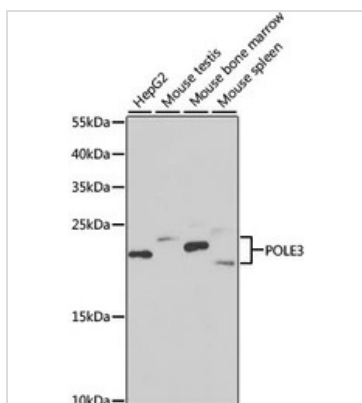
Green : gamma H2AX (phospho S139) used for DNA damage marker

Blue : DAPI



### GTx33158 ICC/IF Image

ICC/IF analysis of U2OS cells using GTx33158 DNA polymerase epsilon 3 antibody.

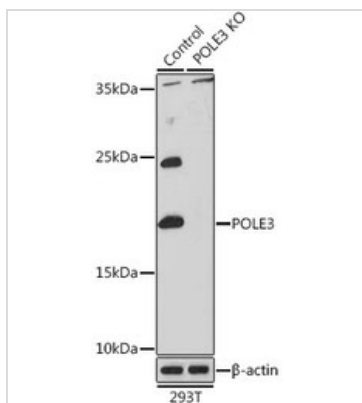


### GTx33158 WB Image

WB analysis of various sample lysates using GTx33158 DNA polymerase epsilon 3 antibody. The signal was developed with ECL plus-Enhanced.

Dilution : 1:1000

Loading : 25µg per lane



### GTx33158 WB Image

WB analysis of normal (control) and knockout (KO) 293T cell lysate using GTx33158 DNA polymerase epsilon 3 antibody.

Dilution : 1:1000

Loading : 25µg per lane



For full product information, images and publications, please visit our [website](https://www.genetex.com).