

# GFER antibody

**Cat. No. GTX33219**

<b>Host</b>	Rabbit
<b>Clonality</b>	Polyclonal
<b>Isotype</b>	IgG
<b>Applications</b>	WB, IHC-P
<b>Reactivity</b>	Human, Mouse, Rat

**Package**  
100 µl

## Applications

### Application Note

\*Optimal dilutions/concentrations should be determined by the researcher.

Suggested dilution	Recommended dilution
WB	1:500 - 1:2000
IHC-P	1:50 - 1:200

Not tested in other applications.

**Calculated MW** 23 kDa. ( [Note](#) )

## Properties

<b>Form</b>	Liquid
<b>Buffer</b>	PBS, 50% Glycerol
<b>Preservative</b>	0.02% Sodium azide
<b>Storage</b>	Store as concentrated solution. Centrifuge briefly prior to opening vial. For short-term storage (1-2 weeks), store at 4°C. For long-term storage, aliquot and store at -20°C or below. Avoid multiple freeze-thaw cycles.
<b>Concentration</b>	Batch dependent (Please refer to the vial label for the specific concentration.)
<b>Immunogen</b>	Recombinant fusion protein containing a sequence corresponding to amino acids 81-205 of human GFER (NP_005253.3).
<b>Purification</b>	Purified by affinity chromatography
<b>Conjugation</b>	Unconjugated

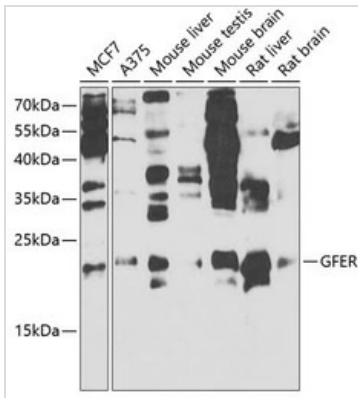
### Note

For laboratory research use only. Not for any clinical, therapeutic, or diagnostic use in humans or animals. Not for animal or human consumption.

Purchasers shall not, and agree not to enable third parties to, analyze, copy, reverse engineer or otherwise attempt to determine the structure or sequence of the product.



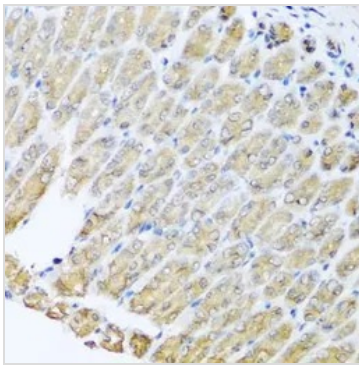
For full product information, images and publications, please visit our [website](#).

**DATA IMAGES**

**GTx33219 WB Image**

WB analysis of various sample lysates using GTx33219 GFER antibody. The signal was developed with ECL plus-Enhanced.

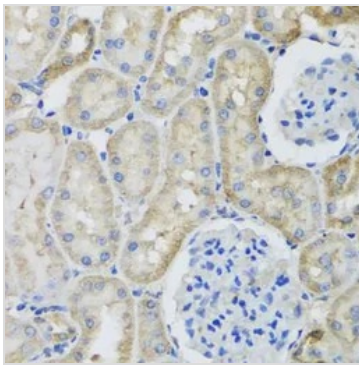
Dilution : 1:1000

Loading : 25µg per lane


**GTx33219 IHC-P Image**

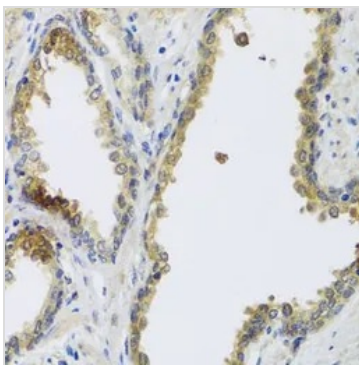
IHC-P analysis of mouse stomach tissue using GTx33219 GFER antibody.

Dilution : 1:100


**GTx33219 IHC-P Image**

IHC-P analysis of rat kidney tissue using GTx33219 GFER antibody.

Dilution : 1:100


**GTx33219 IHC-P Image**

IHC-P analysis of human prostate tissue using GTx33219 GFER antibody.

Dilution : 1:100



For full product information, images and publications, please visit our [website](https://www.genetex.com).