

## NSFL1C antibody

Cat. No. GTX33368

<b>Host</b>	Rabbit
<b>Clonality</b>	Polyclonal
<b>Isotype</b>	IgG
<b>Applications</b>	WB, ICC/IF, IP
<b>Reactivity</b>	Human, Mouse, Rat

**Package**  
100 µl

## Applications

## Application Note

\*Optimal dilutions/concentrations should be determined by the researcher.

Suggested dilution	Recommended dilution
WB	1:500 - 1:2000
ICC/IF	1:50 - 1:200
IP	1:50 - 1:100

Not tested in other applications.

**Calculated MW** 41 kDa. ( [Note](#) )

## Properties

<b>Form</b>	Liquid
<b>Buffer</b>	PBS, 50% Glycerol
<b>Preservative</b>	0.02% Sodium azide
<b>Storage</b>	Store as concentrated solution. Centrifuge briefly prior to opening vial. For short-term storage (1-2 weeks), store at 4°C. For long-term storage, aliquot and store at -20°C or below. Avoid multiple freeze-thaw cycles.
<b>Concentration</b>	Batch dependent (Please refer to the vial label for the specific concentration.)
<b>Immunogen</b>	Recombinant fusion protein containing a sequence corresponding to amino acids 1-185 of human NSFL1C (NP_057227.2).
<b>Purification</b>	Purified by affinity chromatography
<b>Conjugation</b>	Unconjugated

## Note

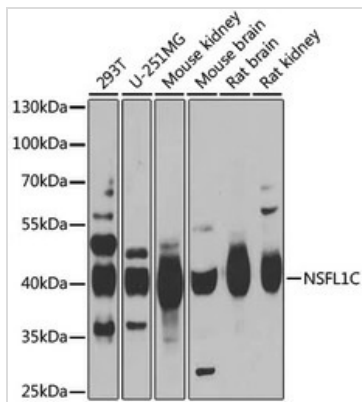
For laboratory research use only. Not for any clinical, therapeutic, or diagnostic use in humans or animals. Not for animal or human consumption.

Purchasers shall not, and agree not to enable third parties to, analyze, copy, reverse engineer or otherwise attempt to determine the structure or sequence of the product.



For full product information, images and publications, please visit our [website](#).

DATA IMAGES

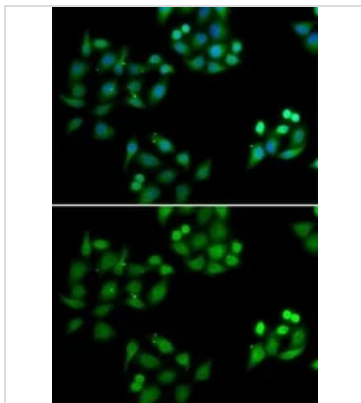


**GTX33368 WB Image**

WB analysis of various sample lysates using GTX33368 NSFL1C antibody.

Dilution : 1:1000

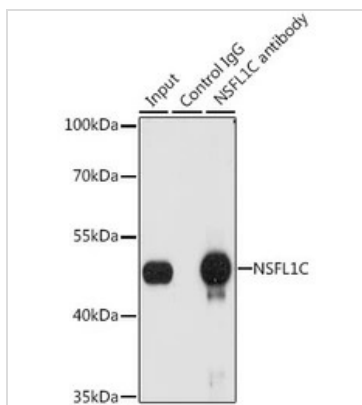
Loading : 25µg per lane



**GTX33368 ICC/IF Image**

ICC/IF analysis of HeLa cells using GTX33368 NSFL1C antibody.

Blue : DAPI



**GTX33368 IP Image**

IP analysis of A549 cell lysate using GTX33368 NSFL1C antibody.

Antibody amount : 3µg / 200µg lysate

Dilution : 1:1000



For full product information, images and publications, please visit our [website](https://www.genetex.com).