

NSUN6 antibody

Cat. No. GTX33369

Host	Rabbit
Clonality	Polyclonal
Isotype	IgG
Applications	WB, IP
Reactivity	Human, Mouse

Package
 100 µl

Applications

Application Note

*Optimal dilutions/concentrations should be determined by the researcher.

Suggested dilution	Recommended dilution
WB	1:500 - 1:2000
IP	1:50 - 1:200

Not tested in other applications.

Calculated MW 52 kDa. ([Note](#))

Properties

Form Liquid

Buffer PBS, 50% Glycerol

Preservative 0.02% Sodium azide

Storage Store as concentrated solution. Centrifuge briefly prior to opening vial. For short-term storage (1-2 weeks), store at 4°C. For long-term storage, aliquot and store at -20°C or below. Avoid multiple freeze-thaw cycles.

Concentration Batch dependent (Please refer to the vial label for the specific concentration.)

Immunogen Recombinant fusion protein containing a sequence corresponding to amino acids 220-469 of human NSUN6 (NP_872349.1).

Purification Purified by affinity chromatography

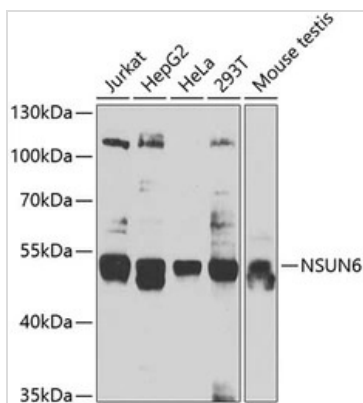
Conjugation Unconjugated

Note For laboratory research use only. Not for any clinical, therapeutic, or diagnostic use in humans or animals. Not for animal or human consumption.

Purchasers shall not, and agree not to enable third parties to, analyze, copy, reverse engineer or otherwise attempt to determine the structure or sequence of the product.



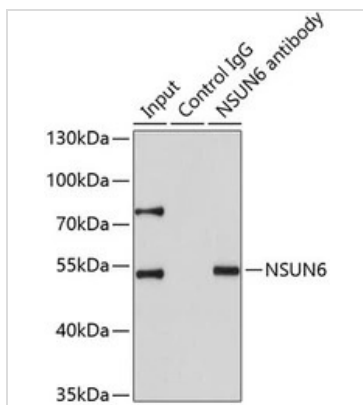
For full product information, images and publications, please visit our [website](#).

DATA IMAGES

GTX33369 WB Image

WB analysis of various sample lysates using GTX33369 NSUN6 antibody.

Dilution : 1:1000

Loading : 25µg per lane


GTX33369 IP Image

IP analysis of HeLa cell lysate using GTX33369 NSUN6 antibody.

Antibody amount : 1µg / 200µg lysate

Dilution : 1:1000



For full product information, images and publications, please visit our [website](#).