

Placental Alkaline Phosphatase antibody

Cat. No. GTX33413

Host	Rabbit
Clonality	Polyclonal
Isotype	IgG
Applications	WB, IHC-P, IP
Reactivity	Human

Package
100 µl

Applications

Application Note

*Optimal dilutions/concentrations should be determined by the researcher.

Suggested dilution	Recommended dilution
WB	1:500 - 1:2000
IHC-P	1:50 - 1:200
IP	1:50 - 1:100

Not tested in other applications.

Calculated MW 58 kDa. ([Note](#))

Properties

Form	Liquid
Buffer	PBS, 50% Glycerol
Preservative	0.02% Sodium azide
Storage	Store as concentrated solution. Centrifuge briefly prior to opening vial. For short-term storage (1-2 weeks), store at 4°C. For long-term storage, aliquot and store at -20°C or below. Avoid multiple freeze-thaw cycles.
Concentration	Batch dependent (Please refer to the vial label for the specific concentration.)
Immunogen	Recombinant fusion protein containing a sequence corresponding to amino acids 260-460 of human ALPP (NP_001623.3).
Purification	Purified by affinity chromatography
Conjugation	Unconjugated

Note

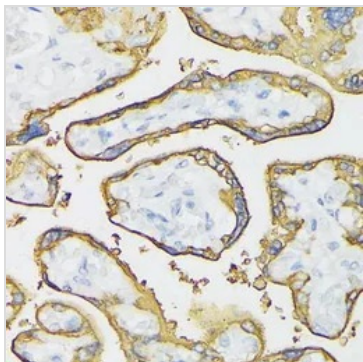
For laboratory research use only. Not for any clinical, therapeutic, or diagnostic use in humans or animals. Not for animal or human consumption.

Purchasers shall not, and agree not to enable third parties to, analyze, copy, reverse engineer or otherwise attempt to determine the structure or sequence of the product.

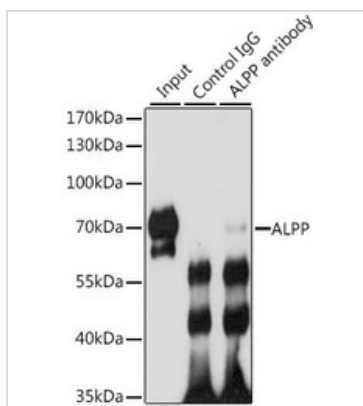


For full product information, images and publications, please visit our [website](#).

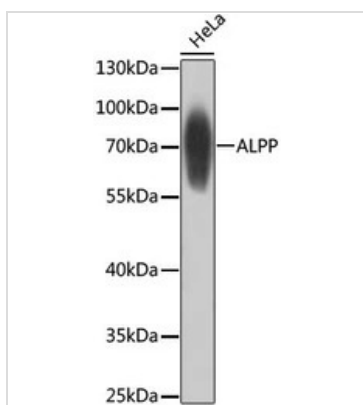
DATA IMAGES

**GTX33413 IHC-P Image**

IHC-P analysis of human placenta tissue using GTX33413 Placental Alkaline Phosphatase antibody.
Dilution : 1:100

**GTX33413 IP Image**

IP analysis of HeLa cell lysate using GTX33413 Placental Alkaline Phosphatase antibody.
Antibody amount : 3µg / 200µg lysate
Dilution : 1:1000

**GTX33413 WB Image**

WB analysis of HeLa cell lysate using GTX33413 Placental Alkaline Phosphatase antibody.
Dilution : 1:1000
Loading : 25µg per lane



For full product information, images and publications, please visit our [website](#).