

## RBBP5 antibody

Cat. No. GTX33461

Host	Rabbit
Clonality	Polyclonal
Isotype	IgG
Application	WB, ICC/IF, IHC-P
Reactivity	Human, Mouse, Rat

Package  
100 µl

## APPLICATION

## Application Note

\*Optimal dilutions/concentrations should be determined by the researcher.

Suggested dilution	Recommended dilution
WB	1:500 - 1:2000
ICC/IF	1:50 - 1:100
IHC-P	1:50 - 1:200

Not tested in other applications.

Calculated MW 59 kDa. ( [Note](#) )

## PROPERTIES

Form	Liquid
Buffer	PBS, 50% Glycerol
Preservative	0.02% Sodium azide
Storage	Store as concentrated solution. Centrifuge briefly prior to opening vial. For short-term storage (1-2 weeks), store at 4°C. For long-term storage, aliquot and store at -20°C or below. Avoid multiple freeze-thaw cycles.
Concentration	Batch dependent (Please refer to the vial label for the specific concentration.)
Immunogen	Recombinant fusion protein containing a sequence corresponding to amino acids 319-538 of human RBBP5 (NP_005048.2).
Purification	Purified by affinity chromatography
Conjugation	Unconjugated

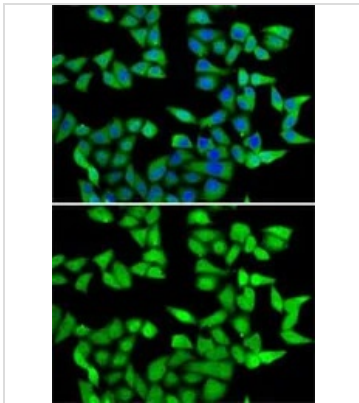
## Note

For laboratory research use only. Not for any clinical, therapeutic, or diagnostic use in humans or animals. Not for animal or human consumption.

Purchasers shall not, and agree not to enable third parties to, analyze, copy, reverse engineer or otherwise attempt to determine the structure or sequence of the product.

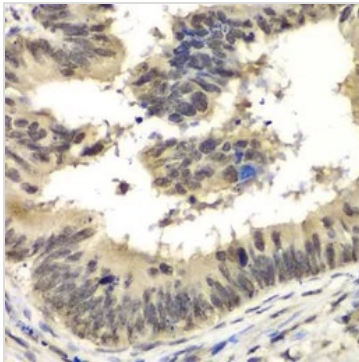


For full product information, images and publications, please visit our [website](#).

**DATA IMAGES**

**GTX33461 ICC/IF Image**

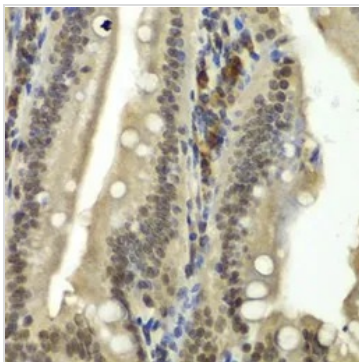
ICC/IF analysis of A549 cells using GTX33461 RBBP5 antibody.

Blue : DAPI


**GTX33461 IHC-P Image**

IHC-P analysis of human colon carcinoma tissue using GTX33461 RBBP5 antibody.

Dilution : 1:100


**GTX33461 IHC-P Image**

IHC-P analysis of rat intestine tissue using GTX33461 RBBP5 antibody.

Dilution : 1:100



For full product information, images and publications, please visit our [website](https://www.genetex.com).