

RFC4 antibody

Cat. No. GTX33465

Host	Rabbit
Clonality	Polyclonal
Isotype	IgG
Applications	WB, ICC/IF, IP
Reactivity	Human

Package
100 µl

Applications

Application Note

*Optimal dilutions/concentrations should be determined by the researcher.

Suggested dilution	Recommended dilution
WB	1:500 - 1:2000
ICC/IF	1:50 - 1:100
IP	1:50 - 1:200

Not tested in other applications.

Calculated MW 40 kDa. ([Note](#))

Properties

Form	Liquid
Buffer	PBS, 50% Glycerol
Preservative	0.02% Sodium azide
Storage	Store as concentrated solution. Centrifuge briefly prior to opening vial. For short-term storage (1-2 weeks), store at 4°C. For long-term storage, aliquot and store at -20°C or below. Avoid multiple freeze-thaw cycles.
Concentration	Batch dependent (Please refer to the vial label for the specific concentration.)
Immunogen	Recombinant fusion protein containing a sequence corresponding to amino acids 204-363 of human RFC4 (NP_002907.1).
Purification	Purified by affinity chromatography
Conjugation	Unconjugated

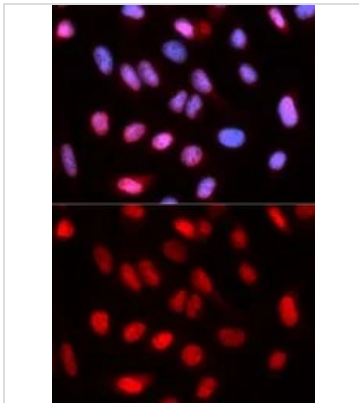
Note

For laboratory research use only. Not for any clinical, therapeutic, or diagnostic use in humans or animals. Not for animal or human consumption.

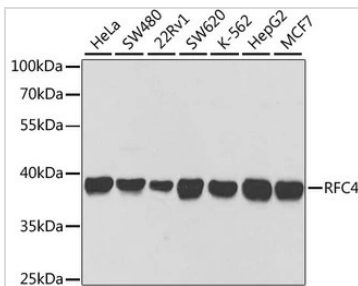
Purchasers shall not, and agree not to enable third parties to, analyze, copy, reverse engineer or otherwise attempt to determine the structure or sequence of the product.



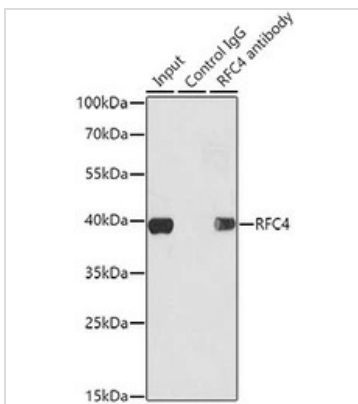
For full product information, images and publications, please visit our [website](#).

DATA IMAGES

GTX33465 ICC/IF Image

ICC/IF analysis of U2OS cells using GTX33465 RFC4 antibody.
Blue : DAPI


GTX33465 WB Image

WB analysis of various sample lysates using GTX33465 RFC4 antibody.
Dilution : 1:1000
Loading : 25µg per lane


GTX33465 IP Image

IP analysis of K562 cell lysate using GTX33465 RFC4 antibody.
Antibody amount : 1µg / 200µg lysate
Dilution : 1:1000



For full product information, images and publications, please visit our [website](https://www.genetex.com).