

UBE2C antibody

Cat. No. GTX33567

Host	Rabbit
Clonality	Polyclonal
Isotype	IgG
Applications	WB, ICC/IF, IHC-P, IP
Reactivity	Human, Mouse, Rat

Package
100 µl

Applications

Application Note

*Optimal dilutions/concentrations should be determined by the researcher.

Suggested dilution	Recommended dilution
WB	1:500 - 1:2000
ICC/IF	1:50 - 1:100
IHC-P	1:50 - 1:200
IP	1:20 - 1:50

Not tested in other applications.

Calculated MW 20 kDa. ([Note](#))

Properties

Form	Liquid
Buffer	PBS, 50% Glycerol
Preservative	0.02% Sodium azide
Storage	Store as concentrated solution. Centrifuge briefly prior to opening vial. For short-term storage (1-2 weeks), store at 4°C. For long-term storage, aliquot and store at -20°C or below. Avoid multiple freeze-thaw cycles.
Concentration	Batch dependent (Please refer to the vial label for the specific concentration.)
Immunogen	Recombinant fusion protein containing a sequence corresponding to amino acids 1-179 of human UBE2C (NP_008950.1).
Purification	Purified by affinity chromatography
Conjugation	Unconjugated

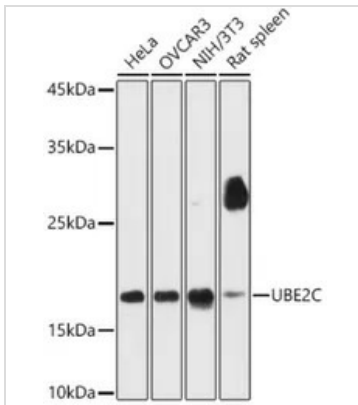
Note

For laboratory research use only. Not for any clinical, therapeutic, or diagnostic use in humans or animals. Not for animal or human consumption.

Purchasers shall not, and agree not to enable third parties to, analyze, copy, reverse engineer or otherwise attempt to determine the structure or sequence of the product.

For full product information, images and publications, please visit our [website](#).

DATA IMAGES

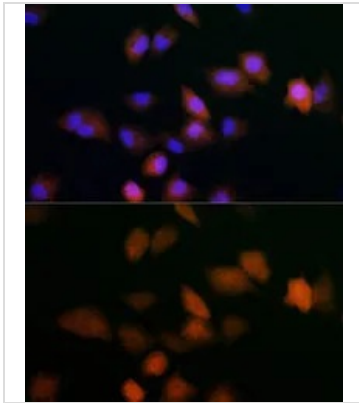


GTX33567 WB Image

WB analysis of various sample lysates using GTX33567 UBE2C antibody.

Dilution : 1:1000

Loading : 25µg per lane

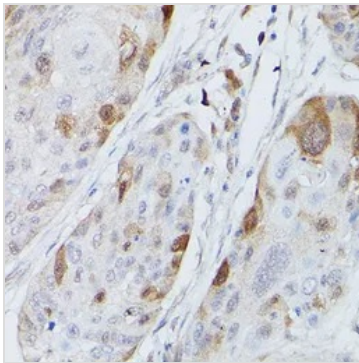


GTX33567 ICC/IF Image

ICC/IF analysis of A549 cells using GTX33567 UBE2C antibody.

Dilution : 1:100

Blue : DAPI



GTX33567 IHC-P Image

IHC-P analysis of human gastric cancer tissue using GTX33567 UBE2C antibody.

Dilution : 1:100



For full product information, images and publications, please visit our [website](https://www.genetex.com).