

# UQCRC2 antibody

**Cat. No. GTX33573**

<b>Host</b>	Rabbit
<b>Clonality</b>	Polyclonal
<b>Isotype</b>	IgG
<b>Application</b>	WB, IHC-P, IP
<b>Reactivity</b>	Human, Mouse, Rat

**Package**  
100 µl

## APPLICATION

### Application Note

\*Optimal dilutions/concentrations should be determined by the researcher.

Suggested dilution	Recommended dilution
WB	1:500 - 1:2000
IHC-P	1:50 - 1:100
IP	1:50 - 1:200

Not tested in other applications.

**Calculated MW** 48 kDa. ( [Note](#) )

## PROPERTIES

<b>Form</b>	Liquid
<b>Buffer</b>	PBS, 50% Glycerol
<b>Preservative</b>	0.02% Sodium azide
<b>Storage</b>	Store as concentrated solution. Centrifuge briefly prior to opening vial. For short-term storage (1-2 weeks), store at 4°C. For long-term storage, aliquot and store at -20°C or below. Avoid multiple freeze-thaw cycles.
<b>Concentration</b>	Batch dependent (Please refer to the vial label for the specific concentration.)
<b>Immunogen</b>	Recombinant fusion protein containing a sequence corresponding to amino acids 224-453 of human UQCRC2 (NP_003357.2).
<b>Purification</b>	Purified by affinity chromatography
<b>Conjugation</b>	Unconjugated

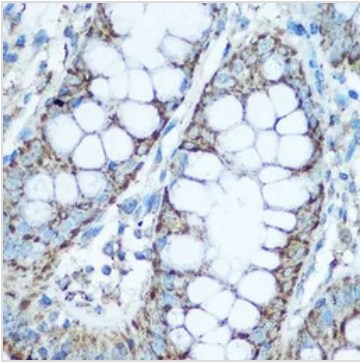
### Note

For laboratory research use only. Not for any clinical, therapeutic, or diagnostic use in humans or animals. Not for animal or human consumption.

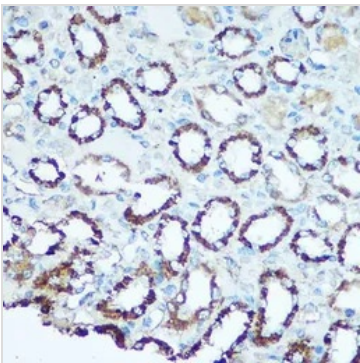
Purchasers shall not, and agree not to enable third parties to, analyze, copy, reverse engineer or otherwise attempt to determine the structure or sequence of the product.



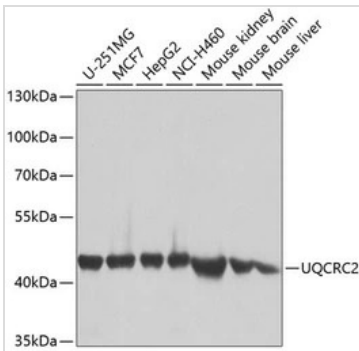
For full product information, images and publications, please visit our [website](#).

**DATA IMAGES**

**GTX33573 IHC-P Image**

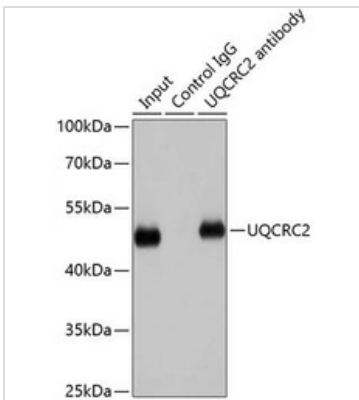
IHC-P analysis of human colon tissue using GTX33573 UQCRC2 antibody.  
Dilution : 1:100


**GTX33573 IHC-P Image**

IHC-P analysis of rat kidney tissue using GTX33573 UQCRC2 antibody.  
Dilution : 1:100


**GTX33573 WB Image**

WB analysis of various sample lysates using GTX33573 UQCRC2 antibody.  
Dilution : 1:1000  
Loading : 25µg per lane


**GTX33573 IP Image**

IP analysis of HepG2 cell lysate using GTX33573 UQCRC2 antibody.  
Antibody amount : 1µg / 200µg lysate  
Dilution : 1:1000



For full product information, images and publications, please visit our [website](https://www.genetex.com).