

Histone H2B (Acetyl Lys20) antibody [RM235]

Cat. No. GTX33593

Host	Rabbit
Clonality	Monoclonal
Isotype	IgG
Applications	WB, ICC/IF, ELISA
Reactivity	Human

Package
100 µg

Applications

Application Note

*Optimal dilutions/concentrations should be determined by the researcher.

Suggested dilution	Recommended dilution
WB	0.5 µg/mL - 2 µg/mL
ICC/IF	1 µg/mL - 2 µg/mL
ELISA	0.2 µg/mL - 1 µg/mL

Not tested in other applications.

Product Note

This antibody reacts to Histone H2B acetylated at Lysine 20 (K20ac). No cross reactivity with non-modified Lysine 20 or other acetylated Lysines in histone H2B.

Properties

Form	Liquid
Buffer	PBS, 1% BSA, 50% Glycerol
Preservative	0.09% Sodium azide
Storage	Store as concentrated solution. Centrifuge briefly prior to opening vial. For short-term storage (1-2 weeks), store at 4°C. For long-term storage, aliquot and store at -20°C or below. Avoid multiple freeze-thaw cycles.
Concentration	Batch dependent (Please refer to the vial label for the specific concentration.)
Immunogen	An acetyl-peptide corresponding to Acetyl-Histone H2B (Lys20).
Purification	Protein A purified From tissue culture supernatant
Conjugation	Unconjugated

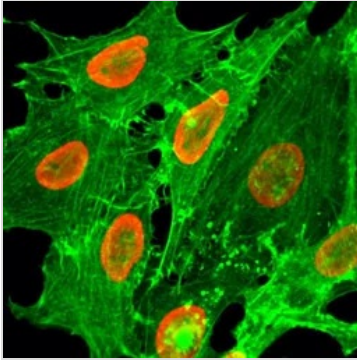


For full product information, images and publications, please visit our [website](#).

For laboratory research use only. Not for any clinical, therapeutic, or diagnostic use in humans or animals. Not for animal or human consumption.

Note

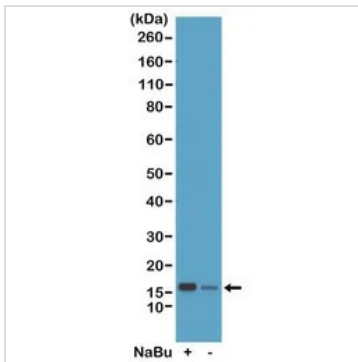
Purchasers shall not, and agree not to enable third parties to, analyze, copy, reverse engineer or otherwise attempt to determine the structure or sequence of the product.

DATA IMAGES

GTX33593 ICC/IF Image

ICC/IF analysis of HeLa cells treated with sodium butyrate using GTX33593 Histone H2B (Acetyl Lys20) antibody [RM235].

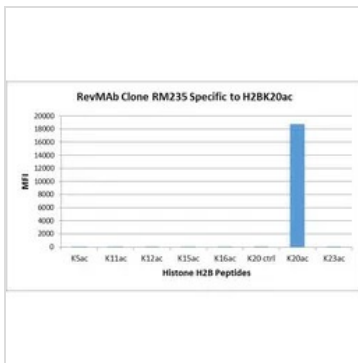
Red : Primary antibody

Green : Actin


GTX33593 WB Image

WB analysis of acid extracts from HeLa cells treated (+) or untreated (-) with sodium butyrate using GTX33593 Histone H2B (Acetyl Lys20) antibody [RM235].

Dilution : 0.5µg/ml


GTX33593 Image

The GTX33593 reacts to Histone H2B acetylated at Lysine 20 (K20ac). No cross reactivity with non-modified Lysine 20 or other acetylated Lysines in histone H2B.



For full product information, images and publications, please visit our [website](https://www.genetex.com).