

## B-Raf (V600E Mutant Specific) antibody [RM8]

**Cat. No. GTX33595**

<b>Host</b>	Rabbit
<b>Clonality</b>	Monoclonal
<b>Isotype</b>	IgG
<b>Application</b>	WB, ICC/IF, IHC-P, ELISA
<b>Reactivity</b>	Human

Reference ( 3 )

Package

100 µg

### APPLICATION

#### Application Note

\*Optimal dilutions/concentrations should be determined by the researcher.

Suggested dilution	Recommended dilution
WB	0.5 - 2 µg/mL
ICC/IF	0.5 - 5 µg/mL
IHC-P	0.5 - 5 µg/mL
ELISA	0.5 - 2 µg/mL

Not tested in other applications.

**Calculated MW** 84 kDa. ( [Note](#) )

**Product Note** This antibody reacts to the BRAF V600E mutant. No cross reactivity with wild type BRAF.

### PROPERTIES

<b>Form</b>	Liquid
<b>Buffer</b>	PBS, 1% BSA, 50% Glycerol
<b>Preservative</b>	0.09% Sodium azide
<b>Storage</b>	Store as concentrated solution. Centrifuge briefly prior to opening vial. For short-term storage (1-2 weeks), store at 4°C. For long-term storage, aliquot and store at -20°C or below. Avoid multiple freeze-thaw cycles.
<b>Concentration</b>	Batch dependent (Please refer to the vial label for the specific concentration.)
<b>Immunogen</b>	A peptide corresponding to BRAF V600E mutant
<b>Purification</b>	Protein A purified From tissue culture supernatant
<b>Conjugation</b>	Unconjugated

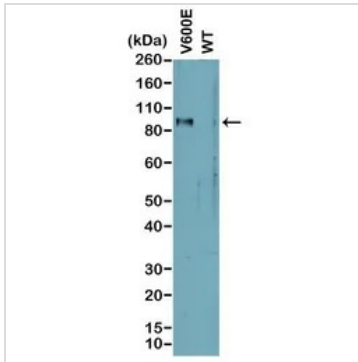


For full product information, images and publications, please visit our [website](#).

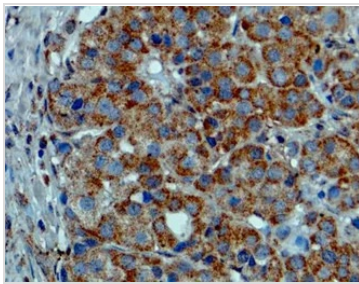
For laboratory research use only. Not for any clinical, therapeutic, or diagnostic use in humans or animals. Not for animal or human consumption.

**Note**

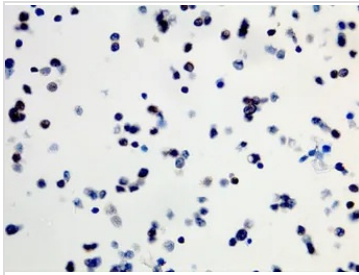
Purchasers shall not, and agree not to enable third parties to, analyze, copy, reverse engineer or otherwise attempt to determine the structure or sequence of the product.

**DATA IMAGES**

**GTX33595 WB Image**

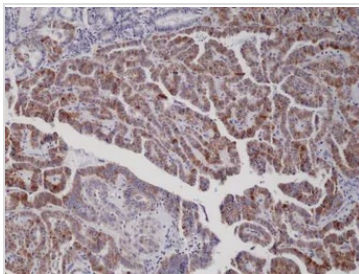
WB analysis of cells expressing endogenous mutant (V600E) BRAF or wild type (WT) protein using GTX33595 B-Raf (V600E Mutant Specific) antibody [RM8].


**GTX33595 IHC-P Image**

IHC-P analysis of melanoma tissue using GTX33595 B-Raf (V600E Mutant Specific) antibody [RM8].


**GTX33595 IHC-P Image**

IHC-P analysis of formalin fixed and paraffin embedded sections of SW40 cells (B-Raf Wide type) using GTX33595 B-Raf (V600E Mutant Specific) antibody [RM8].


**GTX33595 IHC-P Image**

IHC-P analysis of thyroid Carcinoma tissue using GTX33595 B-Raf (V600E Mutant Specific) antibody [RM8].



For full product information, images and publications, please visit our [website](https://www.genetex.com).