

B-Raf (V600E Mutant Specific) antibody [RM8]

Cat. No. GTX33595

Host	Rabbit
Clonality	Monoclonal
Isotype	IgG
Applications	WB, ICC/IF, IHC-P, ELISA
Reactivity	Human

References (3)

Package

100 µg

Applications

Application Note

*Optimal dilutions/concentrations should be determined by the researcher.

Suggested dilution	Recommended dilution
WB	0.5 - 2 µg/mL
ICC/IF	0.5 - 5 µg/mL
IHC-P	0.5 - 5 µg/mL
ELISA	0.5 - 2 µg/mL

Not tested in other applications.

Calculated MW 84 kDa. ([Note](#))**Product Note** This antibody reacts to the BRAF V600E mutant. No cross reactivity with wild type BRAF.

Properties

Form	Liquid
Buffer	PBS, 1% BSA, 50% Glycerol
Preservative	0.09% Sodium azide
Storage	Store as concentrated solution. Centrifuge briefly prior to opening vial. For short-term storage (1-2 weeks), store at 4°C. For long-term storage, aliquot and store at -20°C or below. Avoid multiple freeze-thaw cycles.
Concentration	Batch dependent (Please refer to the vial label for the specific concentration.)
Immunogen	A peptide corresponding to BRAF V600E mutant
Purification	Protein A purified From tissue culture supernatant
Conjugation	Unconjugated



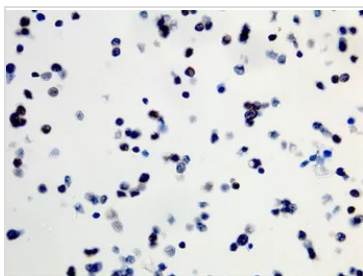
For full product information, images and publications, please visit our [website](#).

For laboratory research use only. Not for any clinical, therapeutic, or diagnostic use in humans or animals. Not for animal or human consumption.

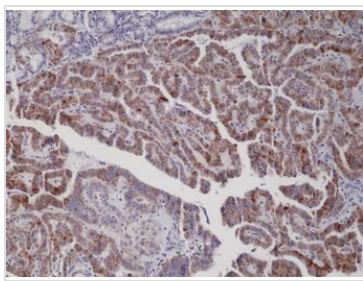
Note

Purchasers shall not, and agree not to enable third parties to, analyze, copy, reverse engineer or otherwise attempt to determine the structure or sequence of the product.

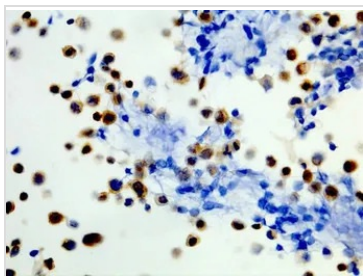
DATA IMAGES

**GTX33595 IHC-P Image**

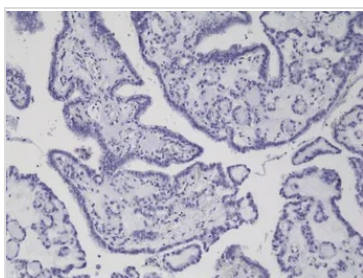
IHC-P analysis of formalin fixed and paraffin embedded sections of SW40 cells (B-Raf Wide type) using GTX33595 B-Raf (V600E Mutant Specific) antibody [RM8].

**GTX33595 IHC-P Image**

IHC-P analysis of thyroid Carcinoma tissue using GTX33595 B-Raf (V600E Mutant Specific) antibody [RM8].

**GTX33595 IHC-P Image**

IHC-P analysis of formalin fixed and paraffin embedded sections of WiDr cells (B-Raf V600E mutant) using GTX33595 B-Raf (V600E Mutant Specific) antibody [RM8].

**GTX33595 IHC-P Image**

IHC-P analysis of thyroid Carcinoma tissue using GTX33595 B-Raf (V600E Mutant Specific) antibody [RM8].



For full product information, images and publications, please visit our [website](#).