

## Histone H2A.XS139ph (phospho Ser139) antibody [RM224]

**Cat. No. GTX33597**

<b>Host</b>	Rabbit
<b>Clonality</b>	Monoclonal
<b>Isotype</b>	IgG
<b>Applications</b>	WB, ICC/IF, ELISA
<b>Reactivity</b>	Human

**Package**  
100 µg

## Applications

**Application Note**

\*Optimal dilutions/concentrations should be determined by the researcher.

Suggested dilution	Recommended dilution
WB	0.5 µg/mL - 2 µg/mL
ICC/IF	0.5 µg/mL - 2 µg/mL
ELISA	0.2 µg/mL - 1 µg/mL

Not tested in other applications.

**Calculated MW** 15 kDa. ([Note](#))

**Product Note** This antibody reacts to Histone H2A.X only when phosphorylated at serine 139. No cross reactivity with other phosphorylated histones.

## Properties

<b>Form</b>	Liquid
<b>Buffer</b>	PBS, 1% BSA, 50% Glycerol
<b>Preservative</b>	0.09% Sodium azide
<b>Storage</b>	Store as concentrated solution. Centrifuge briefly prior to opening vial. For short-term storage (1-2 weeks), store at 4°C. For long-term storage, aliquot and store at -20°C or below. Avoid multiple freeze-thaw cycles.
<b>Concentration</b>	Batch dependent (Please refer to the vial label for the specific concentration.)
<b>Immunogen</b>	A phospho-peptide corresponding to Phospho-Histone H2AX (Ser139).
<b>Purification</b>	Protein A purified From tissue culture supernatant
<b>Conjugation</b>	Unconjugated



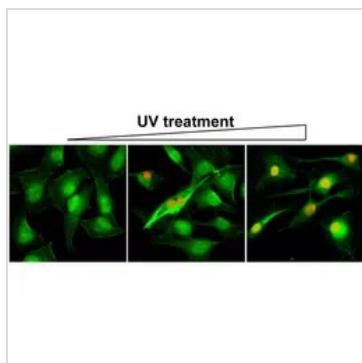
For full product information, images and publications, please visit our [website](#).

For laboratory research use only. Not for any clinical, therapeutic, or diagnostic use in humans or animals. Not for animal or human consumption.

**Note**

Purchasers shall not, and agree not to enable third parties to, analyze, copy, reverse engineer or otherwise attempt to determine the structure or sequence of the product.

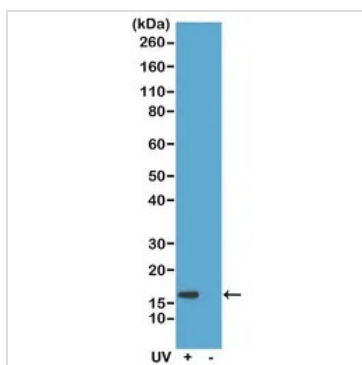
## DATA IMAGES

**GTX33597 ICC/IF Image**

ICC/IF analysis of HeLa cells using GTX33597 Histone H2A.XS139ph (phospho Ser139) antibody [RM224].

Red : Primary antibody

Green : Actin

**GTX33597 WB Image**

WB analysis of acid extracts of HeLa cells treated or non-treated with UV using GTX33597 Histone H2A.XS139ph (phospho Ser139) antibody [RM224].

Dilution : 0.5 $\mu$ g/ml



For full product information, images and publications, please visit our [website](#).