

# Histone H2B (phospho Ser14) antibody [RM238]

**Cat. No. GTX33598**

<b>Host</b>	Rabbit
<b>Clonality</b>	Monoclonal
<b>Isotype</b>	IgG
<b>Application</b>	WB, ICC/IF, ELISA
<b>Reactivity</b>	Human

**Package**  
100 µg

## APPLICATION

### Application Note

\*Optimal dilutions/concentrations should be determined by the researcher.

Suggested dilution	Recommended dilution
WB	0.5 µg/mL - 2 µg/mL
ICC/IF	1 µg/mL - 2 µg/mL
ELISA	0.2 µg/mL - 1 µg/mL

Not tested in other applications.

### Product Note

This antibody reacts to Histone H2B only when phosphorylated at serine 14. No cross reactivity with other phosphorylated histones.

## PROPERTIES

<b>Form</b>	Liquid
<b>Buffer</b>	PBS, 1% BSA, 50% Glycerol
<b>Preservative</b>	0.09% Sodium azide
<b>Storage</b>	Store as concentrated solution. Centrifuge briefly prior to opening vial. For short-term storage (1-2 weeks), store at 4°C. For long-term storage, aliquot and store at -20°C or below. Avoid multiple freeze-thaw cycles.
<b>Concentration</b>	Batch dependent (Please refer to the vial label for the specific concentration.)
<b>Immunogen</b>	A phospho-peptide corresponding to Phospho-Histone H2B (Ser14).
<b>Purification</b>	Protein A purified From tissue culture supernatant
<b>Conjugation</b>	Unconjugated

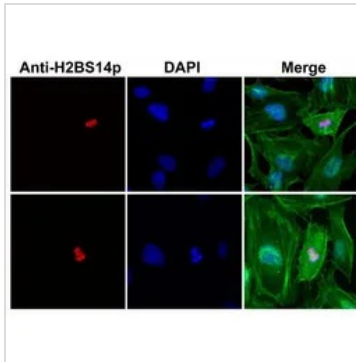


For full product information, images and publications, please visit our [website](#).

For laboratory research use only. Not for any clinical, therapeutic, or diagnostic use in humans or animals. Not for animal or human consumption.

**Note**

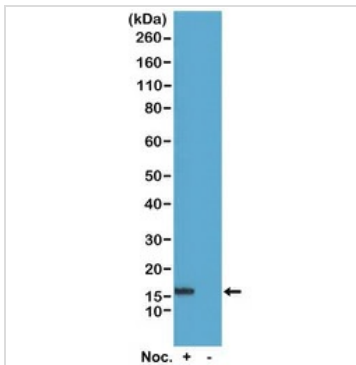
Purchasers shall not, and agree not to enable third parties to, analyze, copy, reverse engineer or otherwise attempt to determine the structure or sequence of the product.

**DATA IMAGES**

**GTX33598 ICC/IF Image**

ICC/IF analysis of HeLa cells using GTX33598 Histone H2B (phospho Ser14) antibody [RM238].

Red : Primary antibody

Green : Actin


**GTX33598 WB Image**

WB analysis of acid extracts of HeLa cells treated or non-treated with Nocodazole using GTX33598 Histone H2B (phospho Ser14) antibody [RM238].

Dilution : 0.5µg/ml



For full product information, images and publications, please visit our [website](#).