

Histone H4 (Tri-Methyl Lys20) antibody [RM208]

Cat. No. GTX33603

Host	Rabbit
Clonality	Monoclonal
Isotype	IgG
Applications	WB, ELISA
Reactivity	Human

Package
100 µg

Applications

Application Note

*Optimal dilutions/concentrations should be determined by the researcher.

Suggested dilution	Recommended dilution
WB	1 µg/mL - 2 µg/mL
ELISA	0.5 µg/mL - 1 µg/mL

Not tested in other applications.

Product Note

This antibody reacts to Histone H4 trimethylated at Lysine 20 (K20me3). It may slightly cross react to dimethylated Lysine 20 (K20me2) at a higher concentration. No cross reactivity with non-modified Lysine 20, monomethylated Lysine 20 (K20me1), or other methylations in histone H4.

Properties

Form	Liquid
Buffer	PBS, 1% BSA, 50% Glycerol
Preservative	0.09% Sodium azide
Storage	Store as concentrated solution. Centrifuge briefly prior to opening vial. For short-term storage (1-2 weeks), store at 4°C. For long-term storage, aliquot and store at -20°C or below. Avoid multiple freeze-thaw cycles.
Concentration	Batch dependent (Please refer to the vial label for the specific concentration.)
Immunogen	A trimethyl-peptide corresponding to trimethyl-Histone H4 (Lys20).
Purification	Protein A purified From tissue culture supernatant
Conjugation	Unconjugated

Note

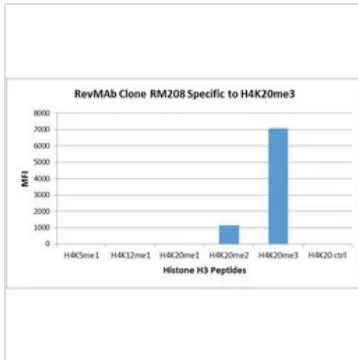
For laboratory research use only. Not for any clinical, therapeutic, or diagnostic use in humans or animals. Not for animal or human consumption.

Purchasers shall not, and agree not to enable third parties to, analyze, copy, reverse engineer or otherwise attempt to determine the structure or sequence of the product.

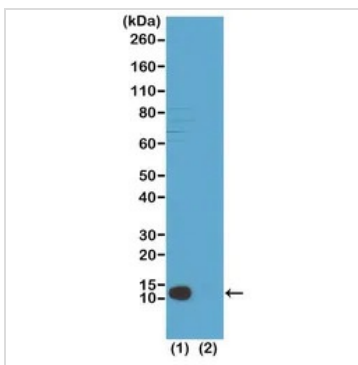


For full product information, images and publications, please visit our [website](#).

Date 2026 / 01 / 08 Page 1 of 2

DATA IMAGES

GTx33603 Image

The GTx33603 reacts to Histone H4 trimethylated at Lysine 20 (K20me3). May slightly cross react to dimethylated Lysine 20 (K20me2) at higher concentrations. No crossreactivity with non-modified Lysine 20, monomethylated Lysine 20 (K20me1), or other methylations in histone H4.


GTx33603 WB Image

WB analysis of extracts of HeLa cells (Lane 1) and recombinant Histone H4 protein (Lane 2) using GTx33603 Histone H4 (Tri-Methyl Lys20) antibody [RM208].

Dilution : 0.5µg/ml



For full product information, images and publications, please visit our [website](https://www.genetex.com).