

## 6X His tag antibody [RM146]

Cat. No. GTX33607

Host	Rabbit
Clonality	Monoclonal
Isotype	IgG
Applications	WB, ICC/IF, FCM, IP, IHC
Reactivity	Species independent

Package  
100 µg

## Applications

## Application Note

\*Optimal dilutions/concentrations should be determined by the researcher.

Suggested dilution	Recommended dilution
WB	0.1 µg/mL - 1 µg/mL
ICC/IF	0.5 µg/mL - 2 µg/mL
FCM	0.5 µg/mL - 2 µg/mL
IP	0.5 µg/mL - 2 µg/mL
IHC	0.1 µg/mL - 1 µg/mL

Not tested in other applications.

## Product Note

This antibody reacts to recombinant proteins containing the 6xHis-Tag or 10xHis-Tag fused to either the amino or carboxy terminus. No cross reactivity with other endogenous protein in mammalian or bacteria cells.

## Properties

Form	Liquid
Buffer	PBS, 1% BSA, 50% Glycerol
Preservative	0.09% Sodium azide
Storage	Store as concentrated solution. Centrifuge briefly prior to opening vial. For short-term storage (1-2 weeks), store at 4°C. For long-term storage, aliquot and store at -20°C or below. Avoid multiple freeze-thaw cycles.
Concentration	Batch dependent (Please refer to the vial label for the specific concentration.)
Immunogen	Mixture of a peptide with 6xHis-Tag at the N-terminus and another peptide with 6xHis-Tag at the C-terminus.
Purification	Protein A purified From tissue culture supernatant
Conjugation	Unconjugated



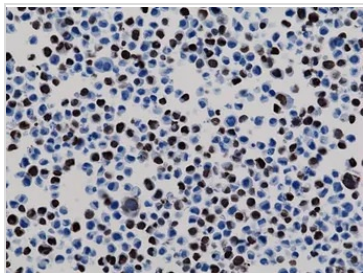
For full product information, images and publications, please visit our [website](#).

Date 2026 / 01 / 29 Page 1 of 2

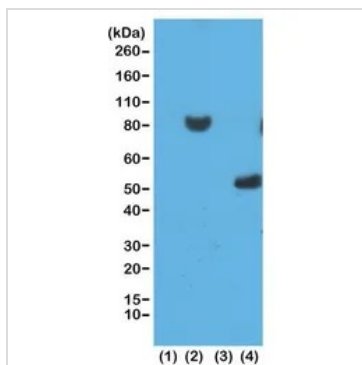
For laboratory research use only. Not for any clinical, therapeutic, or diagnostic use in humans or animals. Not for animal or human consumption.

**Note**

Purchasers shall not, and agree not to enable third parties to, analyze, copy, reverse engineer or otherwise attempt to determine the structure or sequence of the product.

**DATA IMAGES**

**GTx33607 ICC/IF Image**

ICC/IF analysis of 293T cells expressing His-Tag nuclear protein X using GTx33607 6X His tag antibody [RM146].


**GTx33607 WB Image**

WB analysis of various sample lysates using GTx33607 6X His tag antibody [RM146].

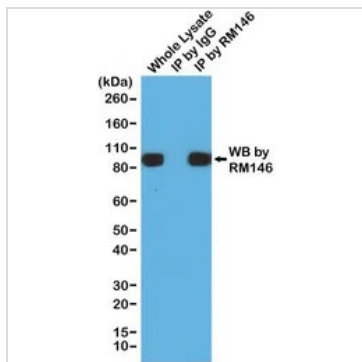
Lane 1 : 293T cells

Lane 2 : 293T cells transfected with His-Tag fusion protein X

Lane 3 : E. coli lysate without His-Tag Protein Y

Lane 4 : E. coli lysate with His-Tag Protein Y

Dilution : 0.2µg/ml


**GTx33607 IP Image**

IP analysis of 293T cells expressing a His-Tag fusion protein using GTx33607 6X His tag antibody [RM146].

Lane 1 : Whole lysate control

Lane 2 : IP by rabbit IgG control

Lane 3 : IP by Primary antibody



For full product information, images and publications, please visit our [website](https://www.genetex.com).