

beta Actin antibody [RM112]

Cat. No. GTX33610

Host	Rabbit
Clonality	Monoclonal
Isotype	IgG
Application	WB, ICC/IF, IHC-P, FACS, IP, ELISA
Reactivity	Human, Mouse, Rat

Reference (1)
Package
100 µl

APPLICATION

Application Note

*Optimal dilutions/concentrations should be determined by the researcher.

Suggested dilution	Recommended dilution
WB	1:1000
ICC/IF	1:200
IHC-P	1:200
FACS	Assay dependent
IP	1:200
ELISA	Assay dependent

Not tested in other applications.

Calculated MW 42 kDa. ([Note](#))

PROPERTIES

Form	Liquid
Buffer	PBS, 1% BSA, 50% Glycerol
Preservative	0.09% Sodium azide
Storage	Store as concentrated solution. Centrifuge briefly prior to opening vial. For short-term storage (1-2 weeks), store at 4°C. For long-term storage, aliquot and store at -20°C or below. Avoid multiple freeze-thaw cycles.
Concentration	Batch dependent (Please refer to the vial label for the specific concentration.)
Immunogen	A peptide corresponding to the N-terminus of β -actin
Purification	Protein A purified From tissue culture supernatant
Conjugation	Unconjugated



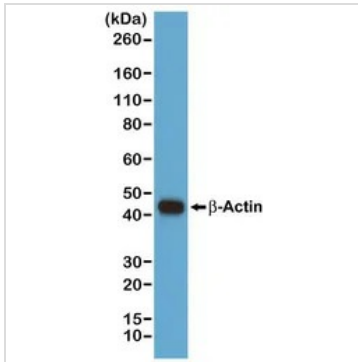
For full product information, images and publications, please visit our [website](#).

For laboratory research use only. Not for any clinical, therapeutic, or diagnostic use in humans or animals. Not for animal or human consumption.

Note

Purchasers shall not, and agree not to enable third parties to, analyze, copy, reverse engineer or otherwise attempt to determine the structure or sequence of the product.

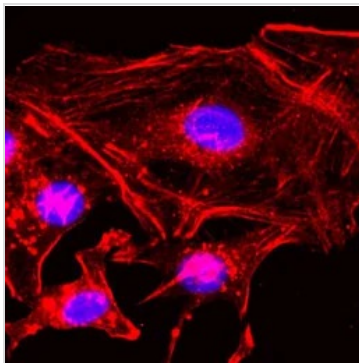
DATA IMAGES



GTx33610 WB Image

WB analysis of A431 cell lysates using GTx33610 beta Actin antibody [RM112].

Dilution : 1:1000



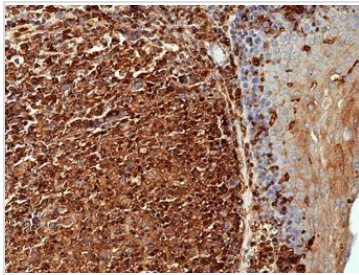
GTx33610 ICC/IF Image

ICC/IF analysis of HeLa cells using GTx33610 beta Actin antibody [RM112].

Red : Primary antibody

Blue : DAPI

Dilution : 1:200



GTx33610 IHC-P Image

IHC-P analysis of human tonsil tissue using GTx33610 beta Actin antibody [RM112].

Dilution : 1:1000



For full product information, images and publications, please visit our [website](https://www.genetex.com).