

Her2 / ErbB2 antibody [RM228]

Cat. No. GTX33616

Host	Rabbit
Clonality	Monoclonal
Isotype	IgG
Applications	WB, IHC-P
Reactivity	Human

Package
100 µl

Applications

Application Note

*Optimal dilutions/concentrations should be determined by the researcher.

Suggested dilution	Recommended dilution
WB	1:1000
IHC-P	1:100 - 1:400

Not tested in other applications.

Calculated MW 138 kDa. ([Note](#))

Properties

Form	Liquid
Buffer	PBS, 1% BSA, 50% Glycerol
Preservative	0.09% Sodium azide
Storage	Store as concentrated solution. Centrifuge briefly prior to opening vial. For short-term storage (1-2 weeks), store at 4°C. For long-term storage, aliquot and store at -20°C or below. Avoid multiple freeze-thaw cycles.
Concentration	Batch dependent (Please refer to the vial label for the specific concentration.)
Immunogen	A peptide corresponding to the C-terminus of Human c-erbB-2/HER-2
Purification	Protein A purified From tissue culture supernatant
Conjugation	Unconjugated

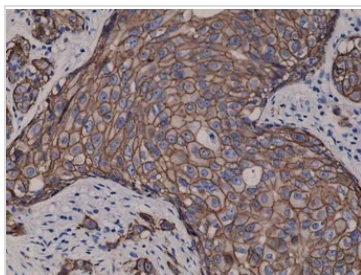
Note

For laboratory research use only. Not for any clinical, therapeutic, or diagnostic use in humans or animals. Not for animal or human consumption.

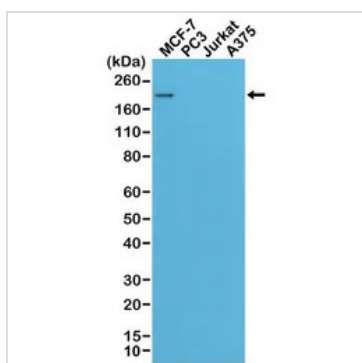
Purchasers shall not, and agree not to enable third parties to, analyze, copy, reverse engineer or otherwise attempt to determine the structure or sequence of the product.



For full product information, images and publications, please visit our [website](#).

DATA IMAGES

GTX33616 IHC-P Image

IHC-P analysis of human breast cancer tissue using GTX33616 Her2 / ErbB2 antibody [RM228].


GTX33616 WB Image

WB analysis of MCF-7, PC3, Jurkat, and A375 cell lysates using GTX33616 Her2 / ErbB2 antibody [RM228].



For full product information, images and publications, please visit our [website](https://www.genetex.com).