

## HIF1 alpha antibody [RM242]

Cat. No. GTX33617

Host	Rabbit
Clonality	Monoclonal
Isotype	IgG
Application	WB, IHC-P
Reactivity	Human, Rat

Reference ( 1 )  
Package  
100 µl

## APPLICATION

## Application Note

\*Optimal dilutions/concentrations should be determined by the researcher.

Suggested dilution	Recommended dilution
WB	1:1000 - 1:2000
IHC-P	1:500 - 1:1000

Not tested in other applications.

Calculated MW 93 kDa. ( [Note](#) )

## PROPERTIES

Form	Liquid
Buffer	PBS, 1% BSA, 50% Glycerol
Preservative	0.09% Sodium azide
Storage	Store as concentrated solution. Centrifuge briefly prior to opening vial. For short-term storage (1-2 weeks), store at 4°C. For long-term storage, aliquot and store at -20°C or below. Avoid multiple freeze-thaw cycles.
Concentration	Batch dependent (Please refer to the vial label for the specific concentration.)
Immunogen	A peptide corresponding to Hypoxia-inducible factor 1-alpha
Purification	Protein A purified From tissue culture supernatant
Conjugation	Unconjugated

## Note

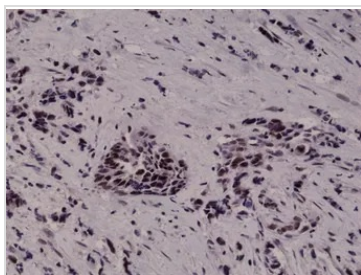
For laboratory research use only. Not for any clinical, therapeutic, or diagnostic use in humans or animals. Not for animal or human consumption.

Purchasers shall not, and agree not to enable third parties to, analyze, copy, reverse engineer or otherwise attempt to determine the structure or sequence of the product.



For full product information, images and publications, please visit our [website](#).

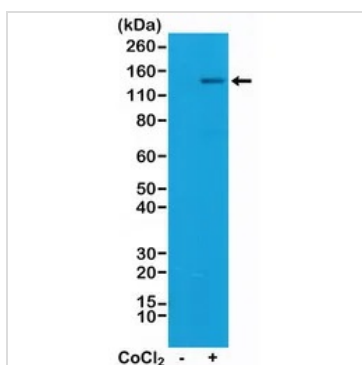
## DATA IMAGES



### GTX33617 IHC-P Image

IHC-P analysis of human breast cancer tissue using GTX33617 HIF1 alpha antibody [RM242].

Dilution : 1:1000



### GTX33617 WB Image

WB analysis of Jurkat cell nontreated or treated with Cobalt(II) chloride (CoCl<sub>2</sub>) lysates using GTX33617 HIF1 alpha antibody [RM242].

Dilution : 1:1000



For full product information, images and publications, please visit our [website](https://www.genetex.com).