

## Macro H2A.1 antibody [RM248]

Cat. No. GTX33622

Host	Rabbit
Clonality	Monoclonal
Isotype	IgG
Applications	WB, ICC/IF, ELISA
Reactivity	Human

Package  
100 µg

## Applications

## Application Note

\*Optimal dilutions/concentrations should be determined by the researcher.

Suggested dilution	Recommended dilution
WB	0.5 µg/mL - 2 µg/mL
ICC/IF	1 µg/mL - 2 µg/mL
ELISA	0.2 µg/mL - 1 µg/mL

Not tested in other applications.

## Product Note

This antibody reacts to the Core histone macro-H2A.1 and macro-H2A.2 proteins, independent of post-translational modifications. No cross reactivity with other histone proteins.

## Properties

Form	Liquid
Buffer	PBS, 1% BSA, 50% Glycerol
Preservative	0.09% Sodium azide
Storage	Store as concentrated solution. Centrifuge briefly prior to opening vial. For short-term storage (1-2 weeks), store at 4°C. For long-term storage, aliquot and store at -20°C or below. Avoid multiple freeze-thaw cycles.
Concentration	Batch dependent (Please refer to the vial label for the specific concentration.)
Immunogen	A peptide corresponding to the C-terminus of human Histone macroH2A1.
Purification	Protein A purified From tissue culture supernatant
Conjugation	Unconjugated



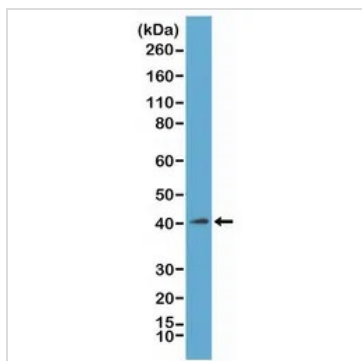
For full product information, images and publications, please visit our [website](#).

For laboratory research use only. Not for any clinical, therapeutic, or diagnostic use in humans or animals. Not for animal or human consumption.

## Note

Purchasers shall not, and agree not to enable third parties to, analyze, copy, reverse engineer or otherwise attempt to determine the structure or sequence of the product.

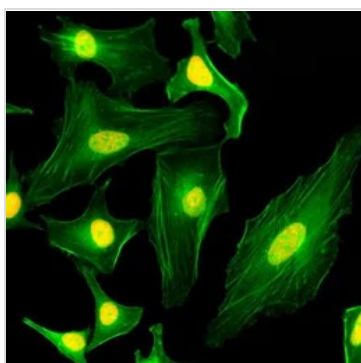
## DATA IMAGES



### GTX33622 WB Image

WB analysis of acid extracts from K562 cells using GTX33622 Macro H2A.1 antibody [RM248].

Dilution : 1µg/ml



### GTX33622 ICC/IF Image

ICC/IF analysis of HeLa cells using GTX33622 Macro H2A.1 antibody [RM248].

Red : Primary antibody

Green : Actin



For full product information, images and publications, please visit our [website](#).