

# Histone H3R2me2 (Symmetric Di-methyl Arg2) antibody

**Cat. No. GTX33905**

<b>Host</b>	Rabbit
<b>Clonality</b>	Polyclonal
<b>Isotype</b>	IgG
<b>Applications</b>	WB, ICC/IF, IHC-P, Dot
<b>Reactivity</b>	Human, Mouse, Rat

**Package**  
100 µg

## Applications

### Application Note

\*Optimal dilutions/concentrations should be determined by the researcher.

Suggested dilution	Recommended dilution
WB	1:500 - 1:2000
ICC/IF	1:50 - 1:200
IHC-P	1:50 - 1:200
Dot	Assay dependent

Not tested in other applications.

## Properties

<b>Form</b>	Liquid
<b>Buffer</b>	PBS, 50% Glycerol
<b>Preservative</b>	0.02% Sodium azide
<b>Storage</b>	Store as concentrated solution. Centrifuge briefly prior to opening vial. For short-term storage (1-2 weeks), store at 4°C. For long-term storage, aliquot and store at -20°C or below. Avoid multiple freeze-thaw cycles.
<b>Concentration</b>	Batch dependent (Please refer to the vial label for the specific concentration.)
<b>Immunogen</b>	A synthetic methylated peptide corresponding to residues surrounding R2 of human histone H3
<b>Purification</b>	Purified by affinity chromatography
<b>Conjugation</b>	Unconjugated

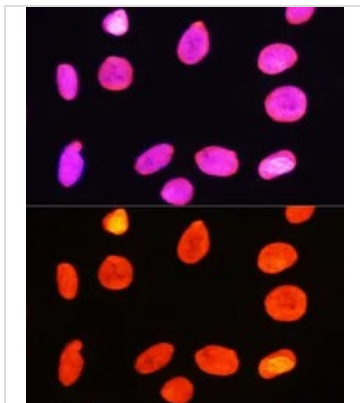
### Note

For laboratory research use only. Not for any clinical, therapeutic, or diagnostic use in humans or animals. Not for animal or human consumption.

Purchasers shall not, and agree not to enable third parties to, analyze, copy, reverse engineer or otherwise attempt to determine the structure or sequence of the product.



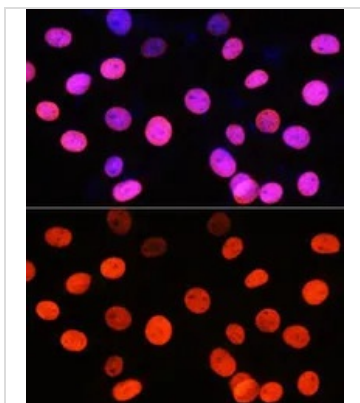
For full product information, images and publications, please visit our [website](#).

**DATA IMAGES**

**GTX33905 ICC/IF Image**

ICC/IF analysis of C6 cells using GTX33905 Histone H3R2me2 (Symmetric Di-methyl Arg2) antibody.

Blue : DAPI

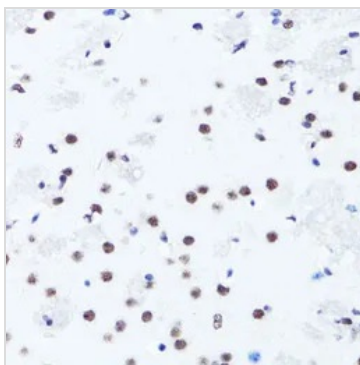
Dilution : 1:100


**GTX33905 ICC/IF Image**

ICC/IF analysis of NIH/3T3 cells using GTX33905 Histone H3R2me2 (Symmetric Di-methyl Arg2) antibody.

Blue : DAPI

Dilution : 1:100


**GTX33905 IHC-P Image**

IHC-P analysis of mouse brain tissue using GTX33905 Histone H3R2me2 (Symmetric Di-methyl Arg2) antibody.

Dilution : 1:100



For full product information, images and publications, please visit our [website](https://www.genetex.com).