

## Histone H3R17me2 (Symmetric Di-methyl Arg17) antibody

**Cat. No. GTX33907**

<b>Host</b>	Rabbit
<b>Clonality</b>	Polyclonal
<b>Isotype</b>	IgG
<b>Applications</b>	WB, ICC/IF, IHC-P, Dot
<b>Reactivity</b>	Human

**Package**  
100 µl

## Applications

**Application Note**

\*Optimal dilutions/concentrations should be determined by the researcher.

Suggested dilution	Recommended dilution
WB	1:500 - 1:2000
ICC/IF	1:50 - 1:200
IHC-P	1:50 - 1:200
Dot	Assay dependent

Not tested in other applications.

## Properties

<b>Form</b>	Liquid
<b>Buffer</b>	PBS, 50% Glycerol
<b>Preservative</b>	0.05% ProClin 300
<b>Storage</b>	Store as concentrated solution. Centrifuge briefly prior to opening vial. For short-term storage (1-2 weeks), store at 4°C. For long-term storage, aliquot and store at -20°C or below. Avoid multiple freeze-thaw cycles.
<b>Concentration</b>	Batch dependent (Please refer to the vial label for the specific concentration.)
<b>Immunogen</b>	A synthetic methylated peptide corresponding to residues surrounding Arg17 of human histone H3
<b>Purification</b>	Purified by affinity chromatography
<b>Conjugation</b>	Unconjugated

**Note**

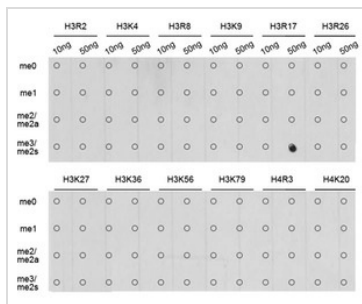
For laboratory research use only. Not for any clinical, therapeutic, or diagnostic use in humans or animals. Not for animal or human consumption.

Purchasers shall not, and agree not to enable third parties to, analyze, copy, reverse engineer or otherwise attempt to determine the structure or sequence of the product.



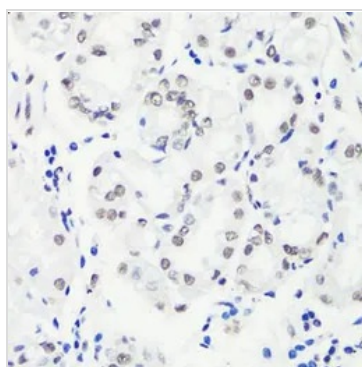
For full product information, images and publications, please visit our [website](#).

DATA IMAGES



**GTX33907 Dot Image**

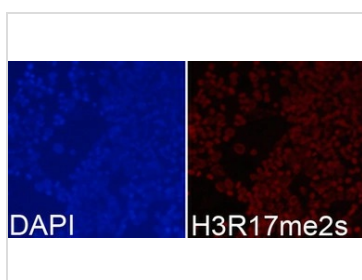
Dot blot analysis of all sorts of methylation peptides using GTX33907 Histone H3R17me2 (Symmetric Di-methyl Arg17) antibody.



**GTX33907 IHC-P Image**

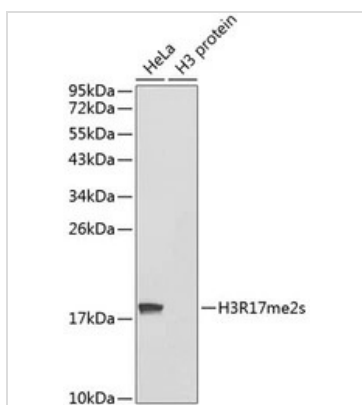
IHC-P analysis of human stomach tissue using GTX33907 Histone H3R17me2 (Symmetric Di-methyl Arg17) antibody.

Dilution : 1:100



**GTX33907 ICC/IF Image**

ICC/IF analysis of 293T cells using GTX33907 Histone H3R17me2 (Symmetric Di-methyl Arg17) antibody. Blue : DAPI



**GTX33907 WB Image**

WB analysis of various sample lysates using GTX33907 Histone H3R17me2 (Symmetric Di-methyl Arg17) antibody.

Loading : 25µg per lane



For full product information, images and publications, please visit our [website](#).