

Histone H4R3me2 (Symmetric dimethyl Arg3) antibody

Cat. No. GTX33909

Host	Rabbit
Clonality	Polyclonal
Isotype	IgG
Applications	WB, ICC/IF, IHC-P, Dot
Reactivity	Human, Mouse, Rat

Package
100 µl

Applications

Application Note

*Optimal dilutions/concentrations should be determined by the researcher.

Suggested dilution	Recommended dilution
WB	1:500 - 1:2000
ICC/IF	1:50 - 1:200
IHC-P	1:50 - 1:200
Dot	Assay dependent

Not tested in other applications.

Properties

Form	Liquid
Buffer	PBS, 50% Glycerol
Preservative	0.02% Sodium azide
Storage	Store as concentrated solution. Centrifuge briefly prior to opening vial. For short-term storage (1-2 weeks), store at 4°C. For long-term storage, aliquot and store at -20°C or below. Avoid multiple freeze-thaw cycles.
Concentration	Batch dependent (Please refer to the vial label for the specific concentration.)
Immunogen	A synthetic peptide of human Symmetric DiMethyl-Histone H4-R3
Purification	Purified by affinity chromatography
Conjugation	Unconjugated

Note

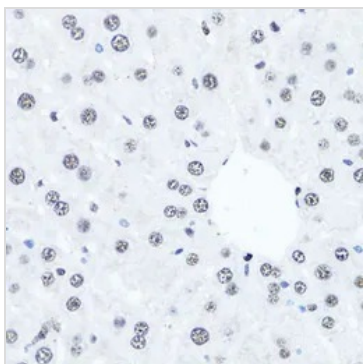
For laboratory research use only. Not for any clinical, therapeutic, or diagnostic use in humans or animals. Not for animal or human consumption.

Purchasers shall not, and agree not to enable third parties to, analyze, copy, reverse engineer or otherwise attempt to determine the structure or sequence of the product.



For full product information, images and publications, please visit our [website](#).

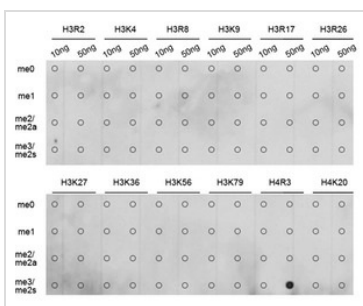
DATA IMAGES



GTX33909 IHC-P Image

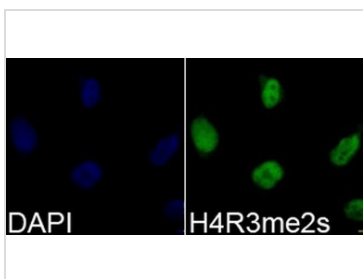
IHC-P analysis of mouse liver tissue using GTX33909 Histone H4R3me2 (Symmetric dimethyl Arg3) antibody.

Dilution : 1:100



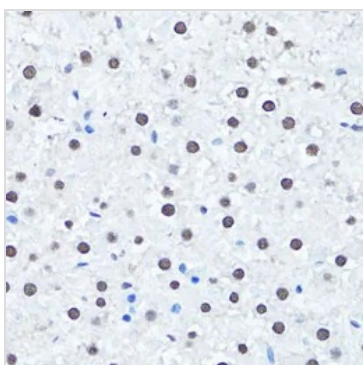
GTX33909 Dot Image

Dot blot analysis of all sorts of methylation peptides using GTX33909 Histone H4R3me2 (Symmetric dimethyl Arg3) antibody.



GTX33909 ICC/IF Image

ICC/IF analysis of 293T cells using GTX33909 Histone H4R3me2 (Symmetric dimethyl Arg3) antibody. Blue : DAPI



GTX33909 IHC-P Image

IHC-P analysis of rat liver tissue using GTX33909 Histone H4R3me2 (Symmetric dimethyl Arg3) antibody. Dilution : 1:100



For full product information, images and publications, please visit our [website](#).