

## alpha Tubulin antibody [F2C]

**Cat. No. GTX33912**

<b>Host</b>	Human
<b>Clonality</b>	Monoclonal
<b>Isotype</b>	IgG2
<b>Applications</b>	WB, ICC/IF
<b>Reactivity</b>	Human, Mouse, Bovine

**Package**  
100 µg

## Applications

**Application Note**

Immunocytochemistry: 1:1000, Western Blot: 1:1000

**Product Note** Recognizes mouse, bovine and human  $\alpha$ -tubulin.

## Properties

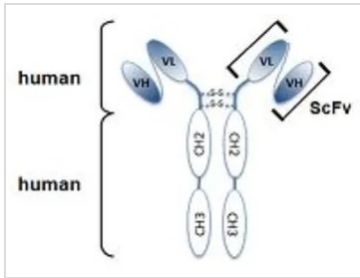
<b>Form</b>	Liquid
<b>Buffer</b>	PBS, 10% Glycerol
<b>Preservative</b>	0.02% Sodium azide
<b>Storage</b>	Store as concentrated solution. Centrifuge briefly prior to opening vial. For short-term storage (1-2 weeks), store at 4°C. For long-term storage, aliquot and store at -20°C or below. Avoid multiple freeze-thaw cycles.
<b>Concentration</b>	1 mg/ml (Please refer to the vial label for the specific concentration.)
<b>Immunogen</b>	Bovine brain tubulin.
<b>Purification</b>	Protein A-affinity purified.
<b>Purity</b>	≥95% by SDS-PAGE.
<b>Conjugation</b>	Unconjugated

**Note** For laboratory research use only. Not for any clinical, therapeutic, or diagnostic use in humans or animals. Not for animal or human consumption.

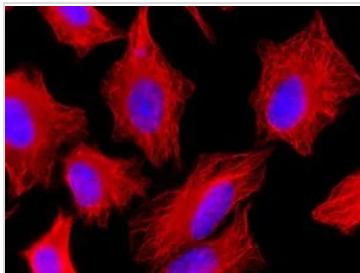
Purchasers shall not, and agree not to enable third parties to, analyze, copy, reverse engineer or otherwise attempt to determine the structure or sequence of the product.

For full product information, images and publications, please visit our [website](#).

## DATA IMAGES



GTX33912 Image



GTX33912 ICC/IF Image

Human alpha-Tubulin is detected by immunocytochemistry using anti-alpha-Tubulin, mAb (rec.) (F2C). Method: HeLa cells are grown in standard culture conditions, fixed with methanol, and incubated with anti-alpha-Tubulin, mAb (rec.) (F2C) (1µg /ml in PBS-BSA). After incubation for 30 min at RT and several washes in PBS, cells are treated with a goat anti-human (Cy3) antibody for 30 min at RT, washed and mounted in Moewiol. Nuclei are stained with DAPI.



For full product information, images and publications, please visit our [website](#).