

alpha Tubulin antibody [F2C] (ATTO-488)

Cat. No. GTX33912-13

Host	Human
Clonality	Monoclonal
Isotype	IgG2
Applications	ICC/IF
Reactivity	Human, Mouse, Bovine

Package
100 µg

Applications

Application Note

Immunocytochemistry: 1:1000

Product Note Recognizes mouse, bovine and human α -tubulin.

Properties

Form	Liquid
Buffer	PBS
Preservative	0.02% Sodium azide
Storage	Store as concentrated solution. Centrifuge briefly prior to opening vial. Store at 4°C. Protect from light.
Concentration	1 mg/ml (Please refer to the vial label for the specific concentration.)
Immunogen	Bovine brain tubulin.
Purification	Protein A-affinity purified.
Conjugation	ATTO-488 Wavelength

Note

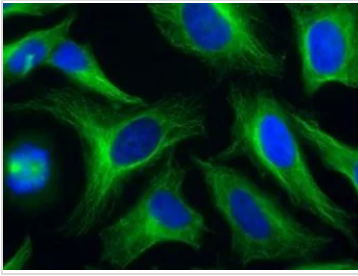
For laboratory research use only. Not for any clinical, therapeutic, or diagnostic use in humans or animals. Not for animal or human consumption.

Purchasers shall not, and agree not to enable third parties to, analyze, copy, reverse engineer or otherwise attempt to determine the structure or sequence of the product.



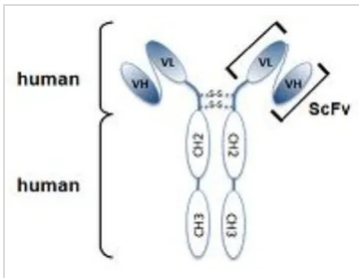
For full product information, images and publications, please visit our [website](#).

DATA IMAGES



GTX333912-13 ICC/IF Image

Human alpha-Tubulin is detected by immunocytochemistry using anti-alpha-Tubulin, mAb (rec.) (F2C) (ATTO 488). Method: HeLa cells are grown in standard culture conditions, fixed with methanol, and incubated with anti-alphaTubulin, mAb (rec.) (F2C) (ATTO 488) (1µg /ml in PBS-BSA). After incubation for 30 min at RT and several washes in PBS, cells are treated with a goat anti-human (Cy3) antibody for 30 min at RT, washed and mounted in Moewiol. Nuclei are stained with DAPI.



GTX333912-13 Image



For full product information, images and publications, please visit our [website](#).