

Giantin antibody [TA10] (ATTO-488)

Cat. No. GTX33924-13

Host	Human
Clonality	Monoclonal
Isotype	IgG2
Applications	ICC/IF
Reactivity	Human, Mouse

Package
100 µg

Applications

Application Note

Immunocytochemistry: 1:1000

Product Note Recognizes human and mouse giantin.

Properties

Form	Liquid
Buffer	PBS
Preservative	0.02% Sodium azide
Storage	Store as concentrated solution. Centrifuge briefly prior to opening vial. Store at 4°C. Protect from light.
Concentration	1 mg/ml (Please refer to the vial label for the specific concentration.)
Immunogen	Human recombinant giantin.
Purification	Protein A-affinity purified.
Conjugation	ATTO-488 Wavelength

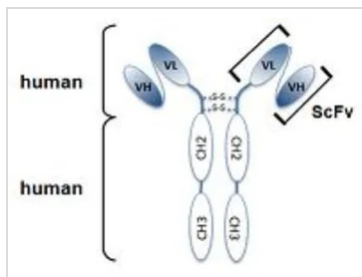
Note

For laboratory research use only. Not for any clinical, therapeutic, or diagnostic use in humans or animals. Not for animal or human consumption.

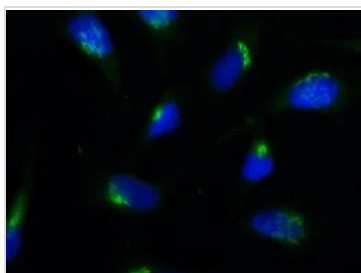
Purchasers shall not, and agree not to enable third parties to, analyze, copy, reverse engineer or otherwise attempt to determine the structure or sequence of the product.

For full product information, images and publications, please visit our [website](#).

DATA IMAGES



GTX33924-13 Image



GTX33924-13 ICC/IF Image

Human giantin is detected by immunocytochemistry using anti-Giantin, mAb (rec.) (TA10) (ATTO 488).
Method: HeLa cells are grown in standard culture conditions, fixed with methanol, and incubated with using anti-Giantin, mAb (rec.) (TA10) (ATTO 488) (1µg /ml in PBS-BSA). After incubation for 30 min at RT and several washes in PBS, cells are mounted in Moewiol. Nuclei are stained with DAPI.



For full product information, images and publications, please visit our [website](#).