

IL1 Receptor 2 antibody [Praxy-1-1]

Cat. No. GTX33927

Host	Mouse
Clonality	Monoclonal
Isotype	IgG2b
Applications	FCM, ELISA
Reactivity	Mouse

Package
100 µg

Applications

Application Note

ELISA: Detection, FACS: 1:100

Product Note Recognizes mouse IL-1R2.

Properties

Form	Liquid
Buffer	PBS, 10% Glycerol
Preservative	0.02% Sodium azide
Storage	Store as concentrated solution. Centrifuge briefly prior to opening vial. For short-term storage (1-2 weeks), store at 4°C. For long-term storage, aliquot and store at -20°C or below. Avoid multiple freeze-thaw cycles.
Concentration	1 mg/ml (Please refer to the vial label for the specific concentration.)
Immunogen	Recombinant mouse IL-1R2 (extracellular domain).
Purification	Protein A-affinity purified.
Purity	??95% by SDS-PAGE.
Conjugation	Unconjugated

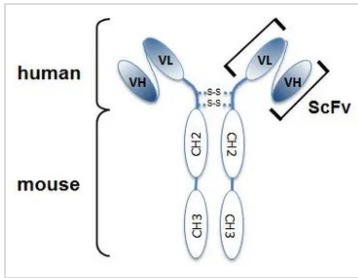
Note

For laboratory research use only. Not for any clinical, therapeutic, or diagnostic use in humans or animals. Not for animal or human consumption.

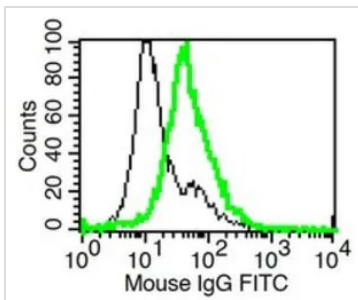
Purchasers shall not, and agree not to enable third parties to, analyze, copy, reverse engineer or otherwise attempt to determine the structure or sequence of the product.

For full product information, images and publications, please visit our [website](#).

DATA IMAGES



GTX33927 Image



GTX33927 FCM Image

Detection of endogenous mouse IL-1R2 with IL-1R2 (mouse), mAb (rec.) (Praxy-1-1). Method: In vitro-cultivated BMN (mouse Neutrophils) (stimulated 24h with hydrocortisone) were stained with IL-1R2 (mouse), mAb (rec.) (Praxy-1-1) (thick green line) or an isotype control (thin black line) at 5µg/ml each, revealed with a secondary anti-mouse antibody (FITC) and then analyzed by flow cytometry.



For full product information, images and publications, please visit our [website](https://www.genetex.com).