

RAB6 (Q72L mutant specific) antibody [AA2]

Cat. No. GTX33942

Host	Human
Clonality	Monoclonal
Isotype	IgG2
Applications	ICC/IF
Reactivity	Human, Mouse, Drosophila

Package
100 µg

Applications

Application Note

Immunocytochemistry: 1:1000

Product Note Recognizes human, mouse and Drosophila GTP-bound Rab6a and Rab6b and mutant Rab6Q72L. Does not detect Rab6-GDP.

Properties

Form	Liquid
Buffer	PBS, 10% Glycerol
Preservative	0.02% Sodium azide
Storage	Store as concentrated solution. Centrifuge briefly prior to opening vial. For short-term storage (1-2 weeks), store at 4°C. For long-term storage, aliquot and store at -20°C or below. Avoid multiple freeze-thaw cycles.
Concentration	1 mg/ml (Please refer to the vial label for the specific concentration.)
Immunogen	Recombinant Rab6AQ72L, a GTP-locked mutant of Rab6A in which Gln72 is replaced by Leu.
Purification	Protein A-affinity purified.
Purity	≥95% by SDS-PAGE.
Conjugation	Unconjugated

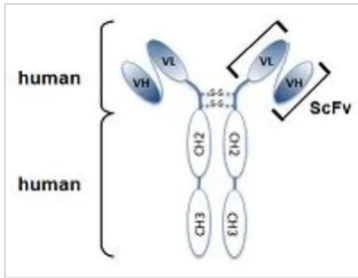
Note

For laboratory research use only. Not for any clinical, therapeutic, or diagnostic use in humans or animals. Not for animal or human consumption.

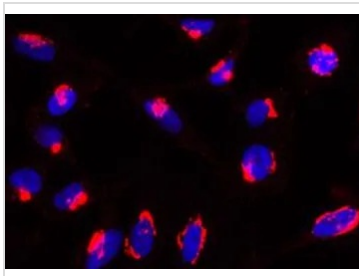
Purchasers shall not, and agree not to enable third parties to, analyze, copy, reverse engineer or otherwise attempt to determine the structure or sequence of the product.

For full product information, images and publications, please visit our [website](#).

DATA IMAGES



GTX33942 Image



GTX33942 ICC/IF Image

Rab6-GTP is detected by immunocytochemistry using anti-Rab6-GTP, mAb (AA2). Method: HeLa cells are grown in standard culture conditions, fixed with paraformaldehyde (3%), permeabilized in PBS+ BSA 0.2 % + Saponin 0.05 % and incubated with anti-Rab6-GTP, mAb (AA2) (1 μ g /ml) in PBS-BSA-Saponin. After incubation for 30 min at RT and several washes in PBS, cells are treated with a goat anti-human (Cy3) antibody in PBS-BSA-Saponin for 30 min at RT, washed and mounted in Moewiol. Nuclei are stained with DAPI.



For full product information, images and publications, please visit our [website](#).