

GAD65 + GAD67 antibody

Cat. No. GTX33949

Host	Rabbit
Clonality	Polyclonal
Isotype	IgG
Application	WB, ICC/IF, IHC-P, IHC-Fr, ELISA
Reactivity	Human, Mouse, Rat, Cat

Package

50 µl

APPLICATION

Application Note

*Optimal dilutions/concentrations should be determined by the researcher.

Suggested dilution	Recommended dilution
WB	1/1,000-1/1,0000
ICC/IF	Assay dependent
IHC-P	Assay dependent
IHC-Fr	1/200-1/5,000
ELISA	Assay dependent

Not tested in other applications.

PROPERTIES

Form	Liquid
Buffer	PBS
Preservative	0.09% Sodium azide
Storage	Store as concentrated solution. Centrifuge briefly prior to opening vial. For short-term storage (1-2 weeks), store at 4°C. For long-term storage, aliquot and store at -20°C or below. Avoid multiple freeze-thaw cycles.
Concentration	Batch dependent (Please refer to the vial label for the specific concentration.)
Immunogen	Synthetic peptide sequence D-F-L-I-E-E-I-E-R-L-G-Q-D-L from the C terminus of rat GAD65. The peptide sequence is identical to rat GAD67.
Purification	Protein A purified
Conjugation	Unconjugated

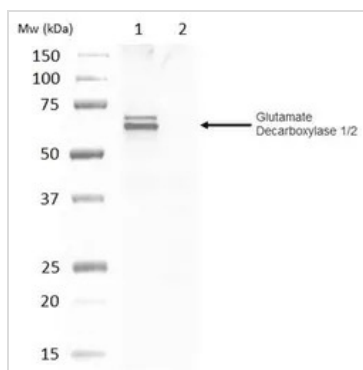
Note

For laboratory research use only. Not for any clinical, therapeutic, or diagnostic use in humans or animals. Not for animal or human consumption.

Purchasers shall not, and agree not to enable third parties to, analyze, copy, reverse engineer or otherwise attempt to determine the structure or sequence of the product.



For full product information, images and publications, please visit our [website](#).

DATA IMAGES

GTX33949 WB Image

WB analysis of mouse brain (lane 1) and negative control mouse skeletal muscle (lane 2) tissue lysate using GTX33949 GAD65 + GAD67 antibody.



For full product information, images and publications, please visit our [website](https://www.genetex.com).