

GPR139 antibody

Cat. No. GTX33973

Host	Rabbit
Clonality	Polyclonal
Isotype	IgG
Applications	WB
Reactivity	Human

Package
 100 µl

Applications
Application Note

*Optimal dilutions/concentrations should be determined by the researcher.

Suggested dilution	Recommended dilution
--------------------	----------------------

WB	1:500-1:2000
----	--------------

Not tested in other applications.

Calculated MW	41 kDa. (Note)
----------------------	----------------------------------

Properties

Form	Liquid
-------------	--------

Buffer	PBS, 0.5% BSA, 50% Glycerol
---------------	-----------------------------

Preservative	0.02% Sodium azide
---------------------	--------------------

Storage	Store as concentrated solution. Centrifuge briefly prior to opening vial. For short-term storage (1-2 weeks), store at 4°C. For long-term storage, aliquot and store at -20°C or below. Avoid multiple freeze-thaw cycles.
----------------	--

Concentration	1 mg/ml (Please refer to the vial label for the specific concentration.)
----------------------	--

Immunogen	Synthesized peptide derived from human GPR139 at 150-230 aa, Internal.
------------------	--

Purification	Purified by antigen-affinity chromatography From serum
---------------------	---

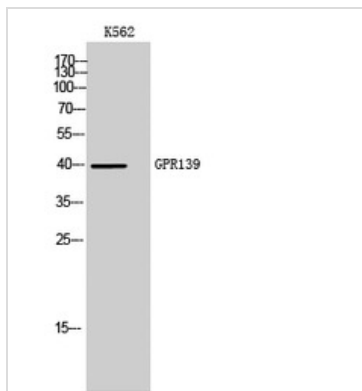
Conjugation	Unconjugated
--------------------	--------------

Note	For laboratory research use only. Not for any clinical, therapeutic, or diagnostic use in humans or animals. Not for animal or human consumption.
-------------	---

Note	Purchasers shall not, and agree not to enable third parties to, analyze, copy, reverse engineer or otherwise attempt to determine the structure or sequence of the product.
-------------	---


 For full product information, images and publications, please visit our [website](#).

DATA IMAGES

**GTX33973 WB Image**

WB analysis of K562 cell lysate using GTX33973 GPR139 antibody.



For full product information, images and publications, please visit our [website](#).