

Inhibin beta E chain antibody

Cat. No. GTX34017

Host	Rabbit
Clonality	Polyclonal
Isotype	IgG
Applications	WB, IHC-P
Reactivity	Human, Mouse

Package
100 µl

Applications

Application Note

*Optimal dilutions/concentrations should be determined by the researcher.

Suggested dilution	Recommended dilution
WB	1:500-1:2000
IHC-P	1:100-1:300

Not tested in other applications.

Calculated MW 39 kDa. ([Note](#))

Properties

Form	Liquid
Buffer	PBS, 0.5% BSA, 50% Glycerol
Preservative	0.02% Sodium azide
Storage	Store as concentrated solution. Centrifuge briefly prior to opening vial. For short-term storage (1-2 weeks), store at 4°C. For long-term storage, aliquot and store at -20°C or below. Avoid multiple freeze-thaw cycles.
Concentration	1 mg/ml (Please refer to the vial label for the specific concentration.)
Immunogen	Synthesized peptide derived from human Inhibin beta-E at 301-350 aa, C-terminal.
Purification	Purified by antigen-affinity chromatography From serum
Conjugation	Unconjugated

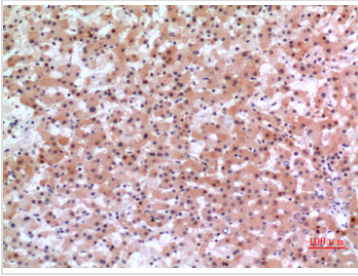
Note

For laboratory research use only. Not for any clinical, therapeutic, or diagnostic use in humans or animals. Not for animal or human consumption.

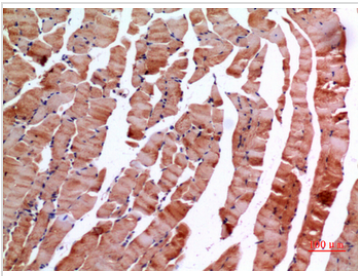
Purchasers shall not, and agree not to enable third parties to, analyze, copy, reverse engineer or otherwise attempt to determine the structure or sequence of the product.



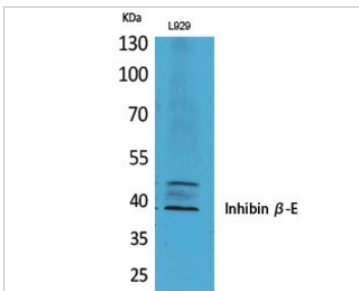
For full product information, images and publications, please visit our [website](#).

DATA IMAGES

GTX34017 IHC-P Image

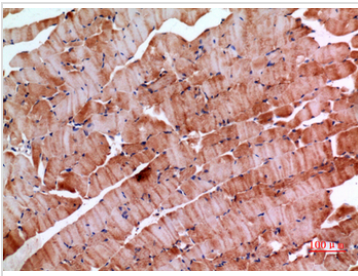
IHC-P analysis of human liver tissue using GTX34017 Inhibin beta E chain antibody.
Dilution : 1:100


GTX34017 IHC-P Image

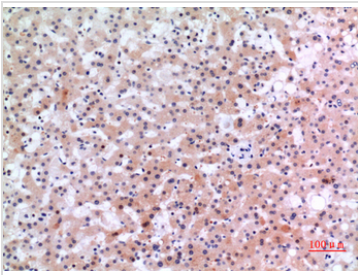
IHC-P analysis of mouse muscle tissue using GTX34017 Inhibin beta E chain antibody.
Dilution : 1:100


GTX34017 WB Image

WB analysis of L929 cell lysate using GTX34017 Inhibin beta E chain antibody.


GTX34017 IHC-P Image

IHC-P analysis of mouse muscle tissue using GTX34017 Inhibin beta E chain antibody.
Dilution : 1:100


GTX34017 IHC-P Image

IHC-P analysis of human liver tissue using GTX34017 Inhibin beta E chain antibody.
Dilution : 1:100



For full product information, images and publications, please visit our [website](https://www.genetex.com).