

Galectin 3 antibody [8D7]

Cat. No. GTX34031

Host	Mouse
Clonality	Monoclonal
Isotype	IgG1
Applications	WB, IHC-P
Reactivity	Human, Mouse

Package
100 µl

Applications

Application Note

*Optimal dilutions/concentrations should be determined by the researcher.

Suggested dilution	Recommended dilution
WB	1:2000-1:5000
IHC-P	1:100-1:200

Not tested in other applications.

Calculated MW 26 kDa. ([Note](#))

Properties

Form	Liquid
Buffer	PBS, 0.5% BSA, 50% Glycerol
Preservative	0.02% Sodium azide
Storage	Store as concentrated solution. Centrifuge briefly prior to opening vial. For short-term storage (1-2 weeks), store at 4°C. For long-term storage, aliquot and store at -20°C or below. Avoid multiple freeze-thaw cycles.
Concentration	1 mg/ml (Please refer to the vial label for the specific concentration.)
Immunogen	Protein
Purification	Purified by antigen-affinity chromatography
Conjugation	Unconjugated

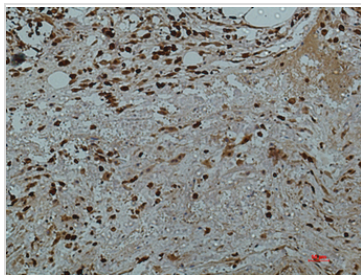
Note

For laboratory research use only. Not for any clinical, therapeutic, or diagnostic use in humans or animals. Not for animal or human consumption.

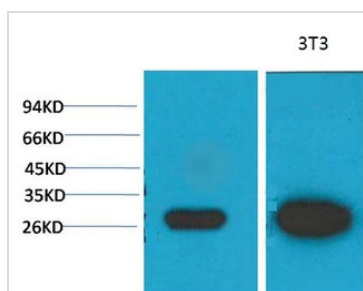
Purchasers shall not, and agree not to enable third parties to, analyze, copy, reverse engineer or otherwise attempt to determine the structure or sequence of the product.



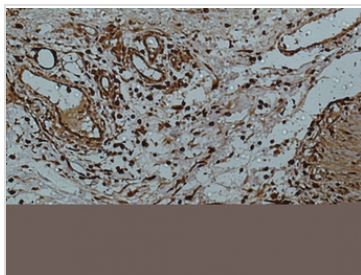
For full product information, images and publications, please visit our [website](#).

DATA IMAGES

GTX34031 IHC-P Image

IHC-P analysis of human colon tissue using GTX34031 Galectin 3 antibody [8D7].
Dilution : 1:50


GTX34031 WB Image

WB analysis of (1) MCF7, (2) 3T3 lysates using GTX34031 Galectin 3 antibody [8D7].
Dilution : 1:2000


GTX34031 IHC-P Image

IHC-P analysis of human colon tissue using GTX34031 Galectin 3 antibody [8D7].
Dilution : 1:50



For full product information, images and publications, please visit our [website](https://www.genetex.com).