

HLA-DQA1 antibody

Cat. No. GTX34049

Host	Rabbit
Clonality	Polyclonal
Isotype	IgG
Applications	IHC-P
Reactivity	Human

Package
 100 µl

Applications
Application Note

*Optimal dilutions/concentrations should be determined by the researcher.

Suggested dilution	Recommended dilution
IHC-P	1:50-1:300

Not tested in other applications.

Properties

Form	Liquid
Buffer	PBS, 50% Glycerol
Preservative	0.02% Sodium azide
Storage	Store as concentrated solution. Centrifuge briefly prior to opening vial. For short-term storage (1-2 weeks), store at 4°C. For long-term storage, aliquot and store at -20°C or below. Avoid multiple freeze-thaw cycles.
Concentration	1 mg/ml (Please refer to the vial label for the specific concentration.)
Immunogen	Synthetic peptide from human HLA-DQA1 protein at 21-70 aa.
Purification	Purified by antigen-affinity chromatography From serum
Conjugation	Unconjugated

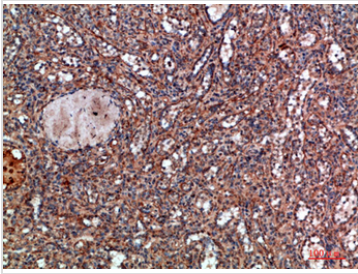
Note

For laboratory research use only. Not for any clinical, therapeutic, or diagnostic use in humans or animals. Not for animal or human consumption.

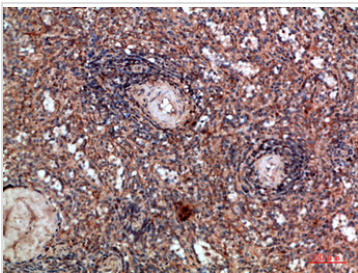
Purchasers shall not, and agree not to enable third parties to, analyze, copy, reverse engineer or otherwise attempt to determine the structure or sequence of the product.


 For full product information, images and publications, please visit our [website](#).

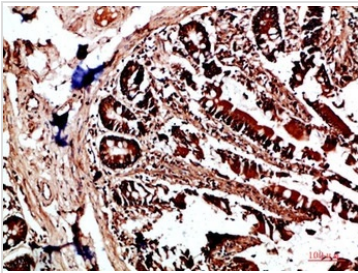
DATA IMAGES

**GTX34049 IHC-P Image**

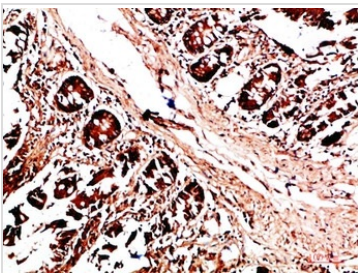
IHC-P analysis of human spleen tissue using GTX34049 HLA-DQA1 antibody.
Dilution : 1:200

**GTX34049 IHC-P Image**

IHC-P analysis of human spleen tissue using GTX34049 HLA-DQA1 antibody.
Dilution : 1:200

**GTX34049 IHC-P Image**

IHC-P analysis of human colon tissue using GTX34049 HLA-DQA1 antibody.
Dilution : 1:200

**GTX34049 IHC-P Image**

IHC-P analysis of human colon tissue using GTX34049 HLA-DQA1 antibody.
Dilution : 1:200



For full product information, images and publications, please visit our [website](#).