

Bax antibody [6F11]

Cat. No. GTX34052

Host	Mouse
Clonality	Monoclonal
Isotype	IgG1
Application	WB, IHC-P
Reactivity	Human, Mouse, Rat, Chicken

[Reference \(2 \)](#)

Package

100 µl

APPLICATION

Application Note

*Optimal dilutions/concentrations should be determined by the researcher.

Suggested dilution	Recommended dilution
WB	1:1000-1:2000
IHC-P	1:100-1:200

Not tested in other applications.

Calculated MW 21 kDa. ([Note](#))

PROPERTIES

Form	Liquid
Buffer	PBS, 0.5% BSA, 50% Glycerol
Preservative	0.02% Sodium azide
Storage	Store as concentrated solution. Centrifuge briefly prior to opening vial. For short-term storage (1-2 weeks), store at 4°C. For long-term storage, aliquot and store at -20°C or below. Avoid multiple freeze-thaw cycles.
Concentration	1 mg/ml (Please refer to the vial label for the specific concentration.)
Immunogen	synthetic peptide derived from Bax at 30-110 aa.
Purification	Purified by antigen-affinity chromatography
Conjugation	Unconjugated

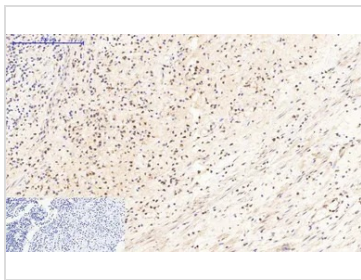
Note

For laboratory research use only. Not for any clinical, therapeutic, or diagnostic use in humans or animals. Not for animal or human consumption.

Purchasers shall not, and agree not to enable third parties to, analyze, copy, reverse engineer or otherwise attempt to determine the structure or sequence of the product.



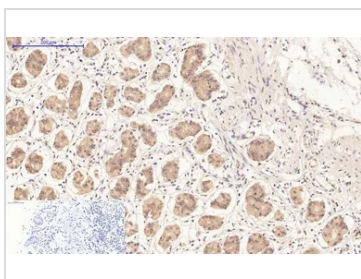
For full product information, images and publications, please visit our [website](#).

DATA IMAGES

GTX34052 IHC-P Image

IHC-P analysis of human appendix tissue using GTX34052 Bax antibody [6F11]. Negative control (the lower left coner) was secondary antibody only.

Antigen retrieval : Sodium citrate pH6.0 was used for antibody retrieval (>98°C, 20min)

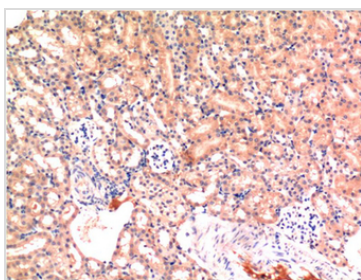
Dilution : 1:200


GTX34052 IHC-P Image

IHC-P analysis of human stomach tissue using GTX34052 Bax antibody [6F11]. Negative control (the lower left coner) was secondary antibody only.

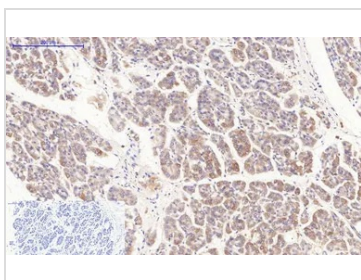
Antigen retrieval : Sodium citrate pH6.0 was used for antibody retrieval (>98°C, 20min)

Dilution : 1:200


GTX34052 IHC-P Image

IHC-P analysis of rat testis tissue using GTX34052 Bax antibody [6F11].

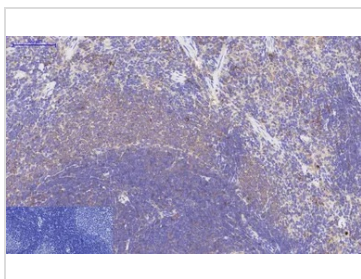
Dilution : 1:200


GTX34052 IHC-P Image

IHC-P analysis of human stomach cancer tissue using GTX34052 Bax antibody [6F11]. Negative control (the lower left coner) was secondary antibody only.

Antigen retrieval : Sodium citrate pH6.0 was used for antibody retrieval (>98°C, 20min)

Dilution : 1:200


GTX34052 IHC-P Image

IHC-P analysis of rat spleen tissue using GTX34052 Bax antibody [6F11]. Negative control (the lower left coner) was secondary antibody only.

Antigen retrieval : Sodium citrate pH6.0 was used for antibody retrieval (>98°C, 20min)

Dilution : 1:200



For full product information, images and publications, please visit our [website](https://www.genetex.com).