

## BMP1 antibody

Cat. No. GTX34060

Host	Rabbit
Clonality	Polyclonal
Isotype	IgG
Applications	IHC-P
Reactivity	Human

**Package**  
100 µl

## Applications

## Application Note

\*Optimal dilutions/concentrations should be determined by the researcher.

Suggested dilution	Recommended dilution
IHC-P	1:50-1:300

Not tested in other applications.

## Properties

Form	Liquid
Buffer	PBS, 50% Glycerol
Preservative	0.02% Sodium azide
Storage	Store as concentrated solution. Centrifuge briefly prior to opening vial. For short-term storage (1-2 weeks), store at 4°C. For long-term storage, aliquot and store at -20°C or below. Avoid multiple freeze-thaw cycles.
Concentration	1 mg/ml (Please refer to the vial label for the specific concentration.)
Immunogen	Synthetic peptide from human BMP-1 protein at 131-180 aa.
Purification	Purified by antigen-affinity chromatography From serum
Conjugation	Unconjugated

## Note

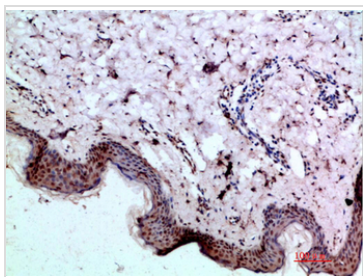
For laboratory research use only. Not for any clinical, therapeutic, or diagnostic use in humans or animals. Not for animal or human consumption.

Purchasers shall not, and agree not to enable third parties to, analyze, copy, reverse engineer or otherwise attempt to determine the structure or sequence of the product.



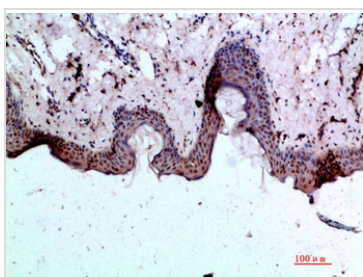
For full product information, images and publications, please visit our [website](#).

## DATA IMAGES



### GTX34060 IHC-P Image

IHC-P analysis of human skin tissue using GTX34060 BMP1 antibody.  
Dilution : 1:200



### GTX34060 IHC-P Image

IHC-P analysis of human skin tissue using GTX34060 BMP1 antibody.  
Dilution : 1:200



For full product information, images and publications, please visit our [website](#).