

alpha Smooth Muscle Actin antibody [6A12]

Cat. No. GTX34111

Host	Mouse
Clonality	Monoclonal
Isotype	IgG1
Application	WB, IHC-P
Reactivity	Human, Mouse, Rat

Package
100 µl

APPLICATION

Application Note

*Optimal dilutions/concentrations should be determined by the researcher.

Suggested dilution	Recommended dilution
WB	1:10000
IHC-P	1:1000-1:2000

Not tested in other applications.

Calculated MW 42 kDa. ([Note](#))

PROPERTIES

Form	Liquid
Buffer	PBS, 0.5% BSA, 50% Glycerol
Preservative	0.02% Sodium azide
Storage	Store as concentrated solution. Centrifuge briefly prior to opening vial. For short-term storage (1-2 weeks), store at 4°C. For long-term storage, aliquot and store at -20°C or below. Avoid multiple freeze-thaw cycles.
Concentration	Batch dependent (Please refer to the vial label for the specific concentration.)
Immunogen	Synthetic Peptide
Purification	Purified by antigen-affinity chromatography
Conjugation	Unconjugated

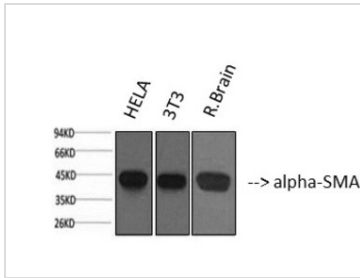
Note

For laboratory research use only. Not for any clinical, therapeutic, or diagnostic use in humans or animals. Not for animal or human consumption.

Purchasers shall not, and agree not to enable third parties to, analyze, copy, reverse engineer or otherwise attempt to determine the structure or sequence of the product.



For full product information, images and publications, please visit our [website](#).

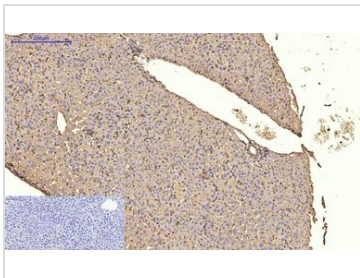
DATA IMAGES

GTX34111 WB Image

WB analysis of various sample lysates using GTX34111 alpha Smooth Muscle Actin antibody [6A12].

Lane 1 : HeLa cell lysate

Lane 2 : 3T3 cell lysate

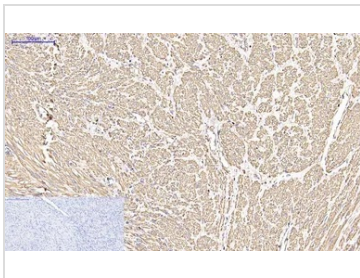
Lane 3 : Rat brain tissue lysate


GTX34111 IHC-P Image

IHC-P analysis of mouse liver tissue using GTX34111 alpha Smooth Muscle Actin antibody [6A12]. Negative control (the lower left corner) was secondary antibody only.

Antigen retrieval : Sodium citrate pH6.0 was used for antibody retrieval (>98°C, 20min)

Dilution : 1:200

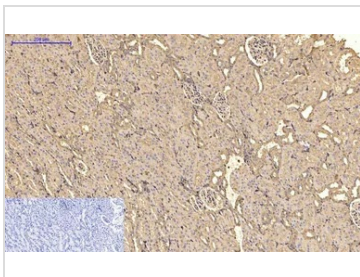

GTX34111 IHC-P Image

IHC-P analysis of human uterus cancer tissue using GTX34111 alpha Smooth Muscle Actin antibody [6A12].

Negative control (the lower left corner) was secondary antibody only.

Antigen retrieval : Sodium citrate pH6.0 was used for antibody retrieval (>98°C, 20min)

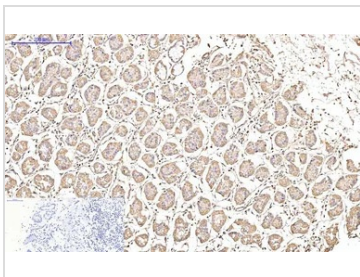
Dilution : 1:200


GTX34111 IHC-P Image

IHC-P analysis of rat kidney tissue using GTX34111 alpha Smooth Muscle Actin antibody [6A12]. Negative control (the lower left corner) was secondary antibody only.

Antigen retrieval : Sodium citrate pH6.0 was used for antibody retrieval (>98°C, 20min)

Dilution : 1:200


GTX34111 IHC-P Image

IHC-P analysis of human stomach tissue using GTX34111 alpha Smooth Muscle Actin antibody [6A12].

Negative control (the lower left corner) was secondary antibody only.

Antigen retrieval : Sodium citrate pH6.0 was used for antibody retrieval (>98°C, 20min)

Dilution : 1:200



For full product information, images and publications, please visit our [website](https://www.genetex.com).